

S P A T U L A

STUHHH

GIORGIO GRAESAN
and Friends

CALCE E PIETRA...
solo natura



27
a n n o



S P A T U L A

STUHHI

È un prodotto innovativo, ma che nasce dalla cultura Veneziana nel tradizionale settore degli stucchi lucidi e che è stato modificato ed adeguato alle attuali necessità di colorazioni e rapidità di posa. Spatula Stuhhi è un rivestimento assolutamente ecologico e non contiene solventi.

Spatula Stuhhi è Vivo, Naturale. Mai uguale neanche a se stesso.



An exceptional mineral stucco of great effect. Based on lime, it has shiny quality that varies with the method of application. Ecological natural material. **Spatula Stuhhi is alive, Natural. Each one is always unique.**

Auserlesener, effektvoller Mineralspachtel auf Kalkbasis mit! Glanzvermögen je nach Verarbeitung. Baubiologisch natürlicher Werkstoff. **Spatula Stuhhi ist lebendig, Natürlich. Immer wieder anders.**

Stuc minéral excellent, de grand effet, à base de chaux, avec des propriétés de brillance suivant le travail effectué. Matériel écologique naturel. **Spatula Stuhhi est Vivant, Naturel. Jamais pareil, non plus à lui-même.**

Excelente estuco mineral de gran efecto, a base de cal, con propiedades de brillo según el tipo de trabajado. Material ecológico natural. **Spatula Stuhhi es Vivo, Natural. Único en su género.**

Ένα εξαιρετικό, φυσικό Βενετσιάνικο stucco μοναδικού εφέ. Με βάση τον ασβέστη, παρουσιάζει τέτοιες λάμπεις που διαφοροποιούνται αναλόγως της εφαρμογής. Είναι ένα απόλυτα Οικολογικό stucco και δεν εμπεριέχει διαλύτες. **To Spatula Stuhhi είναι Ζωντανό, Φυσικό. Πλήρως καινοτόμο και ξεπερνά τον εαυτό του.**

别具一格的天然采坭，打造琳琅满目的大理石光华特效。以灰岩、理石精研粉末为基，随着每位能工巧匠奇思手法各异，每一次创作产生的光华纹理都不尽相同。采用天然生态环保材料，光华生动且纹理自然，每一次创作都是独一无二的艺术奇迹。



ZA

ZB

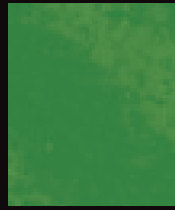
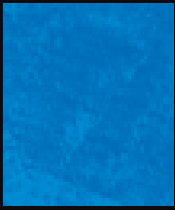
ZC

ZD

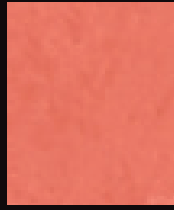
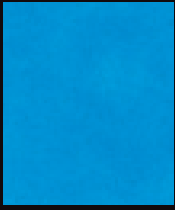
ZE

ZF

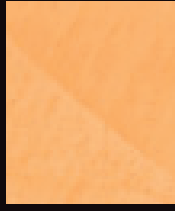
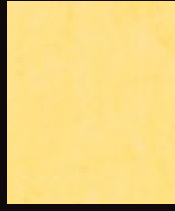
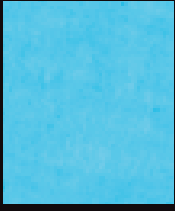
ZG



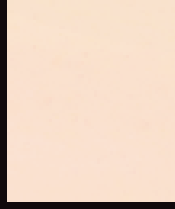
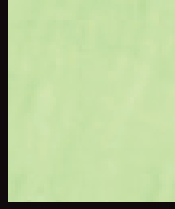
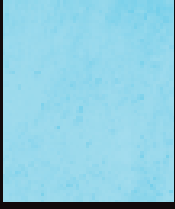
S1



S2



S3



S4

I Colori del Sole

SC

SB

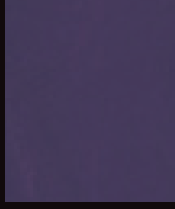
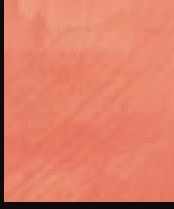
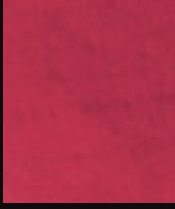
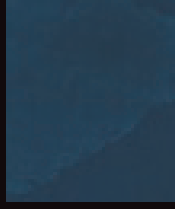
SD

SE

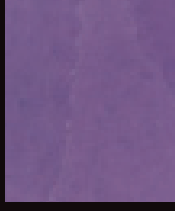
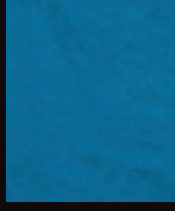
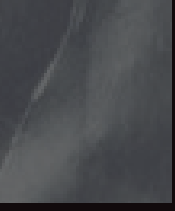
SA

SV

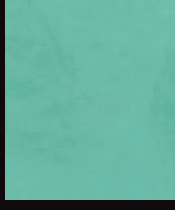
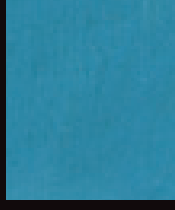
SG



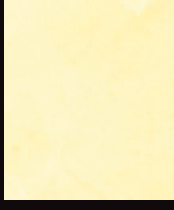
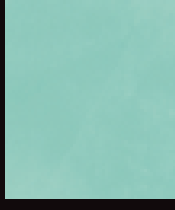
S1



S2



S3



S4

I Colori di Londra

I Colori di New York

	NA	NB	NS	NL	NR	NO	NY	
								S1
								S2
								S3
								S4

I Colori dell'Anima

	AR	AA	AL	AM	AF	AV	AZ	
								S1
								S2
								S3
								S4

I Colori della Pietra

GG	GF	GE	GD	GC	GB	GA	
							S1
							S2
							S3
							S4

I Colori di Portofino

KB	KA	KF	KC	KD	KG	KE	
							S1
							S2
							S3
							S4



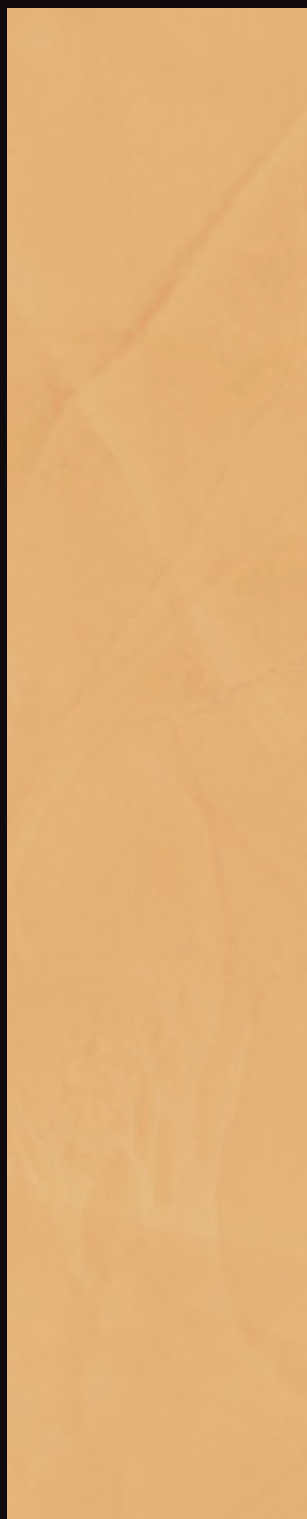
I C O L O R I D E L L A
P I E T R A

GG	GF	GE	GD	GC	GB	GA	
							S1
							S2
							S3
							S4

Colori fotografici ed indicativi - Photographic and suggested colours - Couleurs photographiques et indicatives - Fotografische und hinweisende Farben - Colores fotográficos y sugerencias - Φωτογραφικά και προτεινόμενα χρώματα.



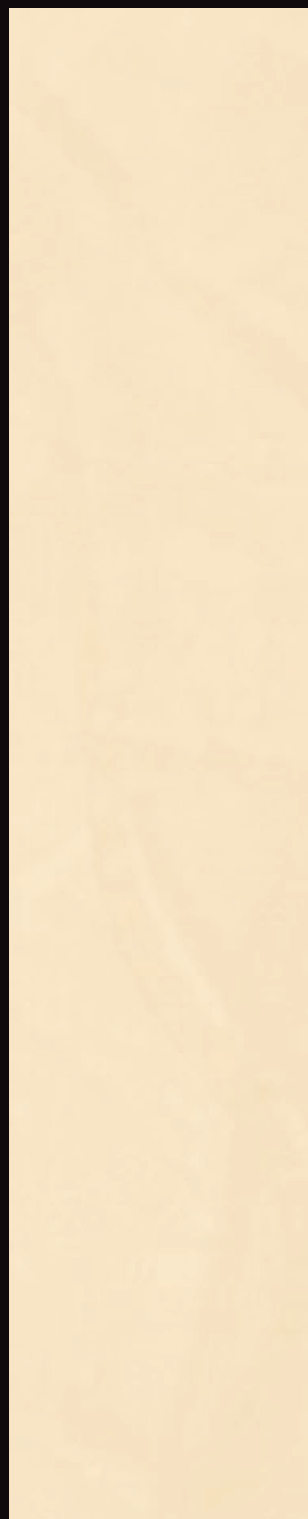
Borgogna



S1 GG



S2 GG

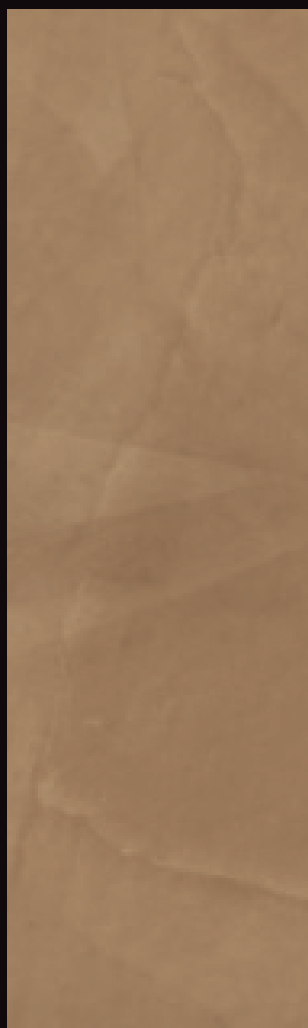


S3 GG

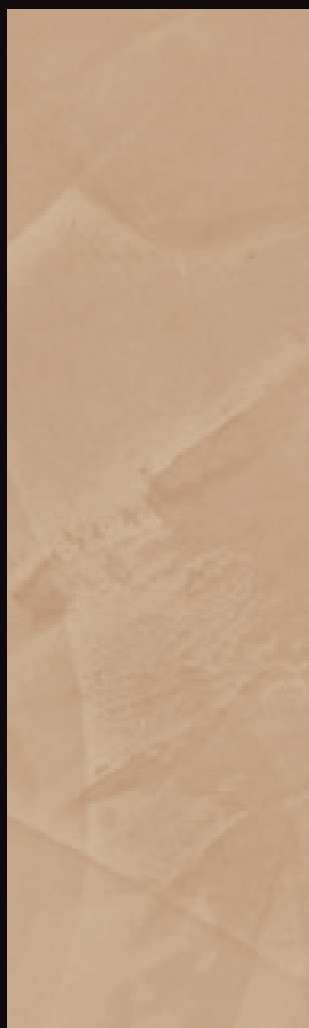


S4 GG

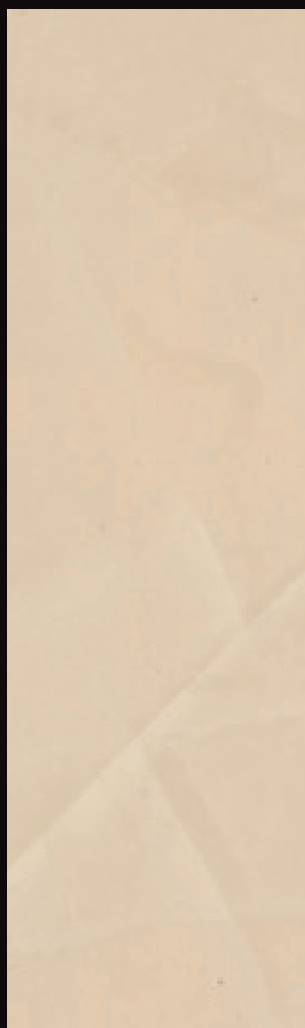
Mokaitte



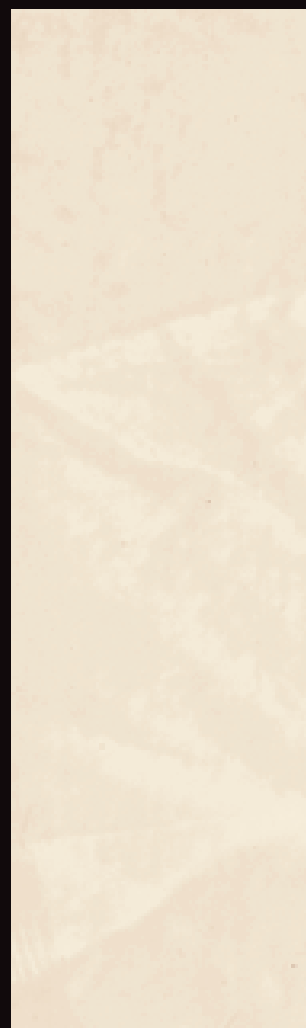
S1 GF



S2 GF



S3 GF

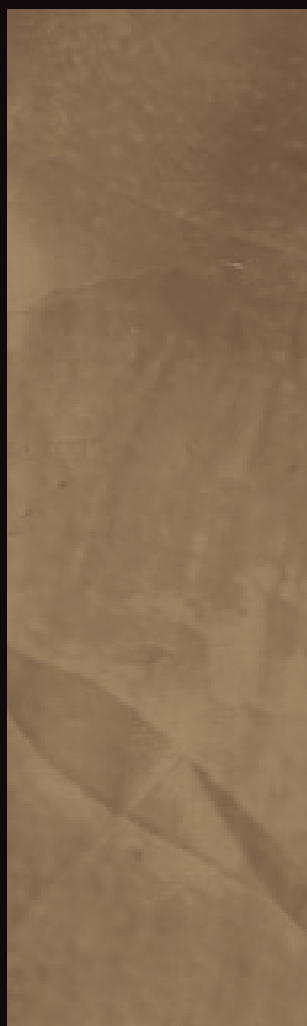


S4 GF

Bronzo Amani



I Colori della Pietra



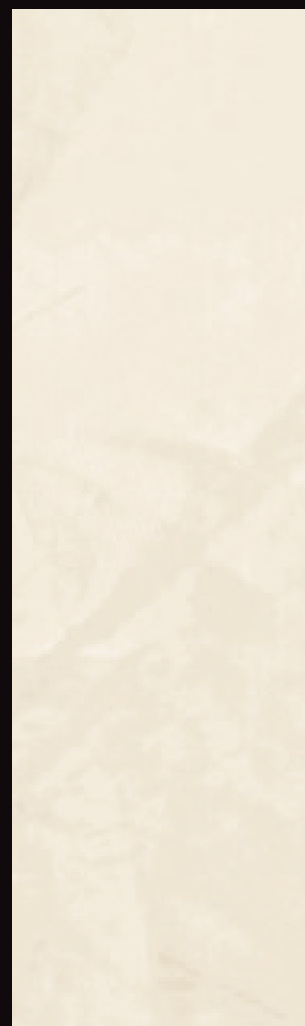
S1 GE



S2 GE



S3 GE

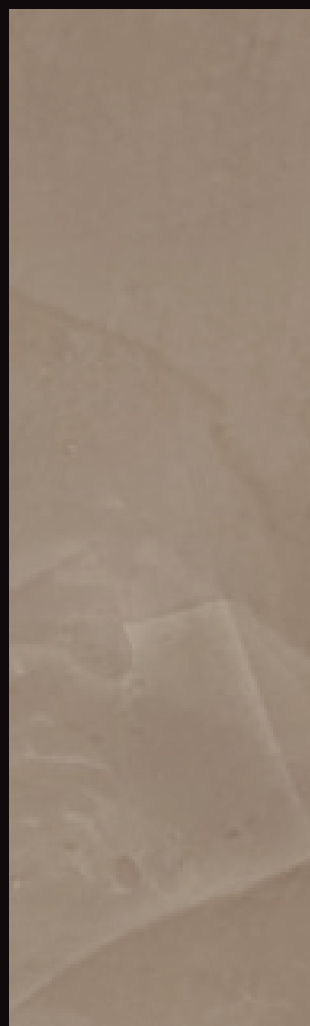


S4 GE

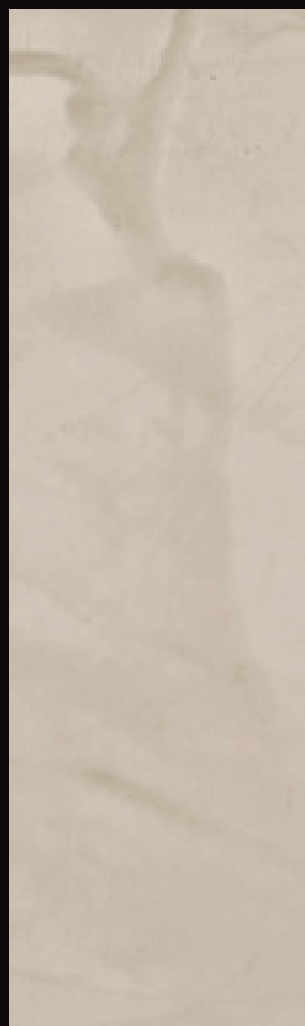
Pietra Lavica



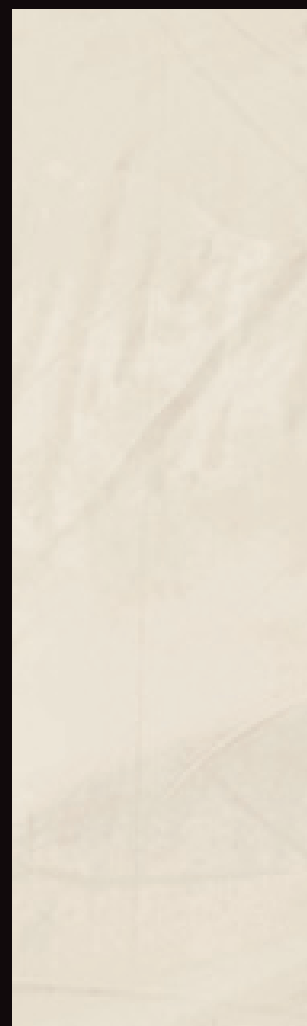
S1 GD



S2 GD



S3 GD

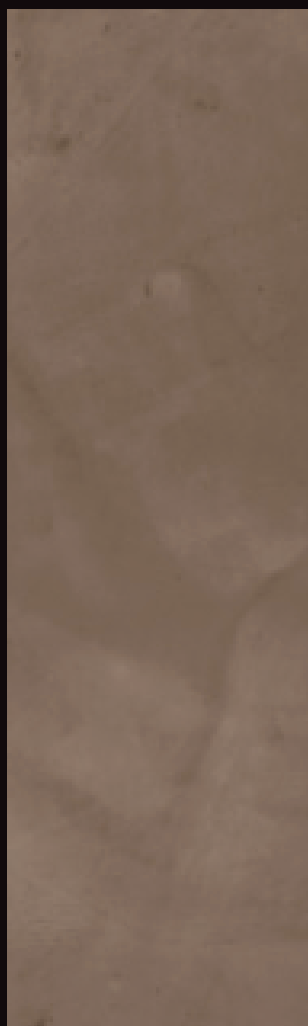


S4 GD

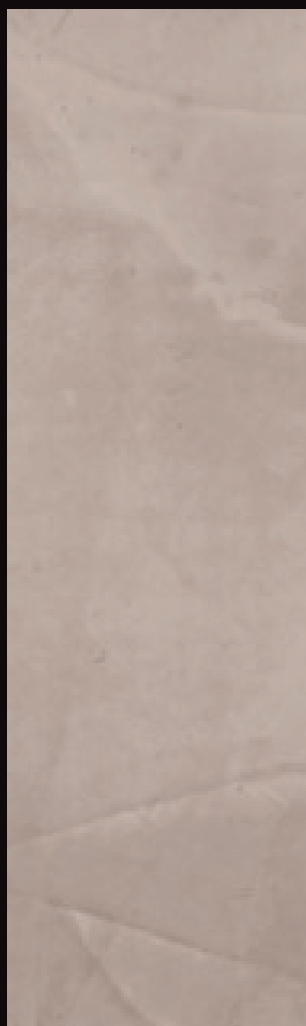
Quarzo Fumè



S1 GC



S2 GC

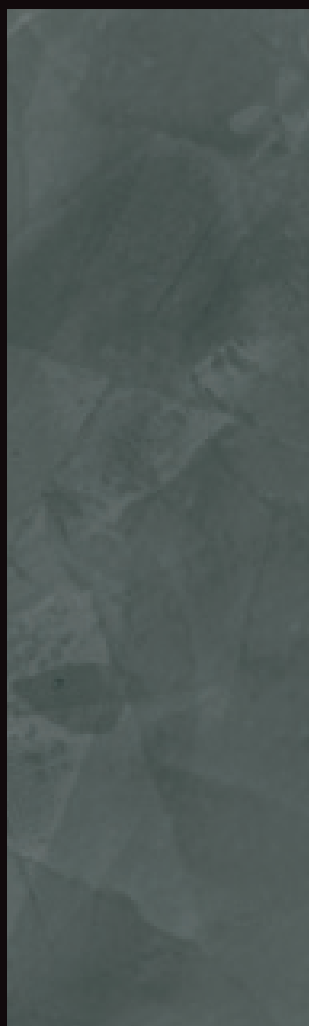


S3 GC

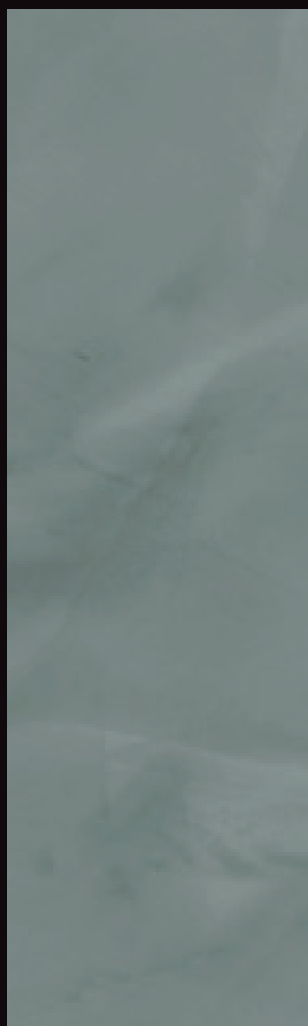


S4 GC

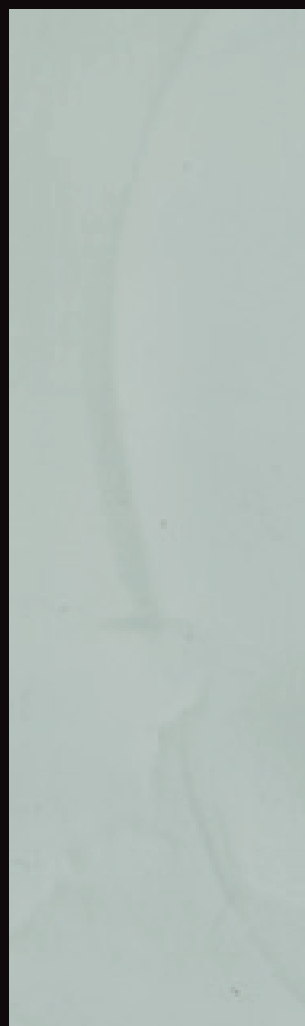
Verde Diaspro



S1 GB



S2 GB

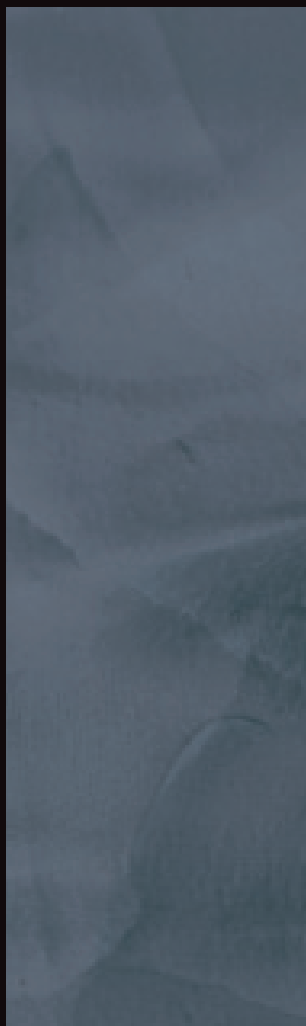


S3 GB

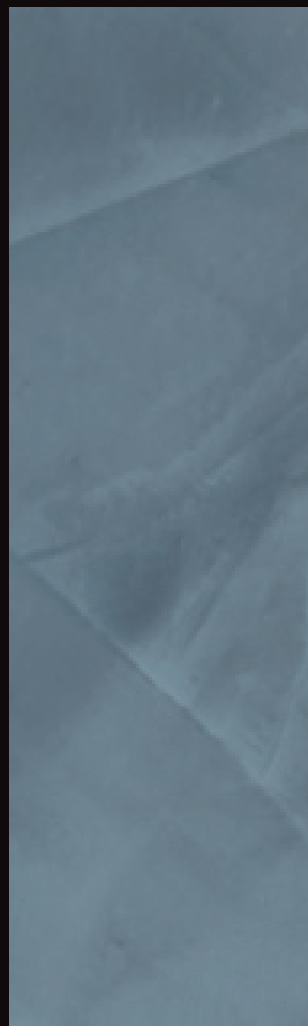


S4 GB

Agate Blu



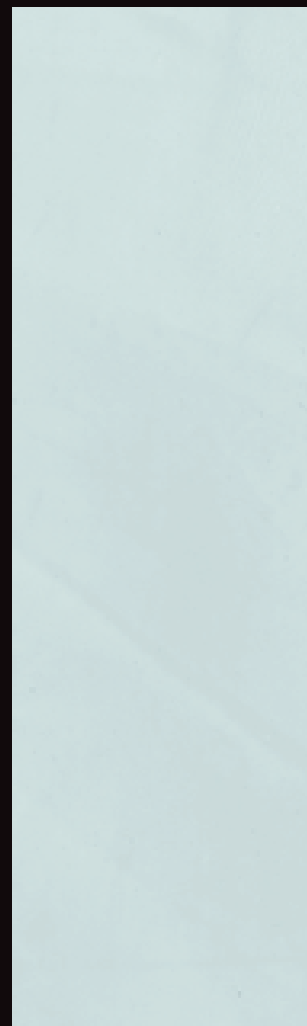
S1 GA



S2 GA



S3 GA



S4 GA



I C O L O R I D I
PORTOFINO

KB	KA	KF	KC	KD	KG	KE	
							S1
							S2
							S3
							S4

Colori fotografici ed indicativi - Photographic and suggested colours - Couleurs photographiques et indicatives - Fotografische und hinweisende Farben - Colores fotográficos y sugerencias - Φωτογραφικά και προτεινόμενα χρώματα.

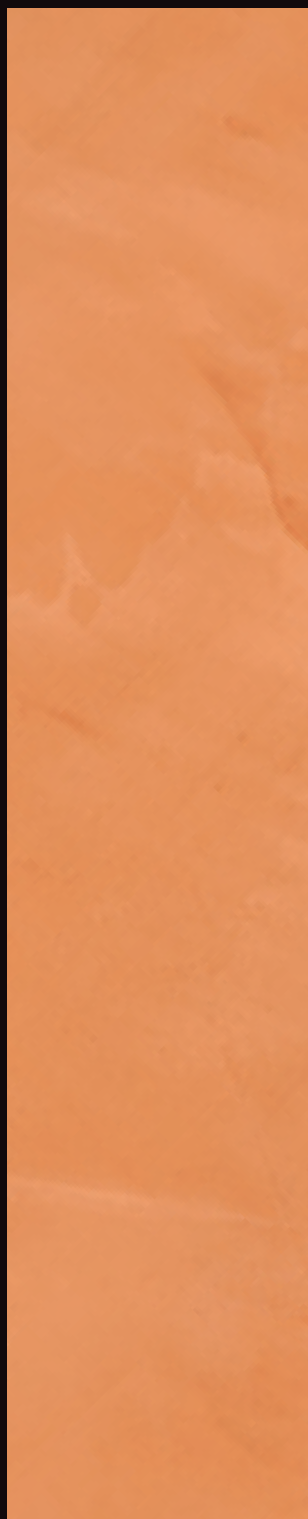
S1 KB



Arancio



S1 KB



S2 KB



S3 KB



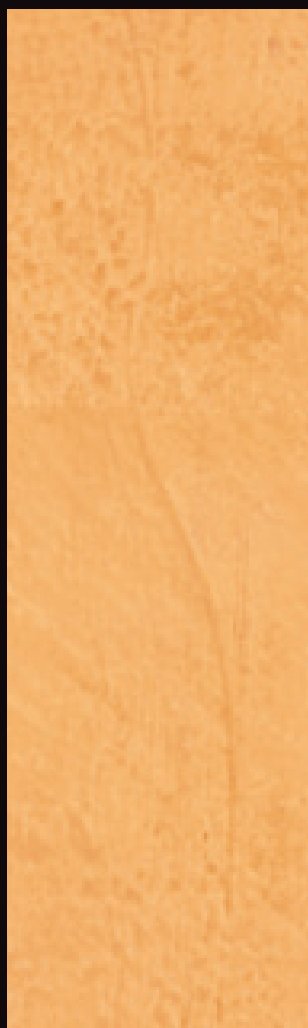
S4 KB

Giallo

S2 KA



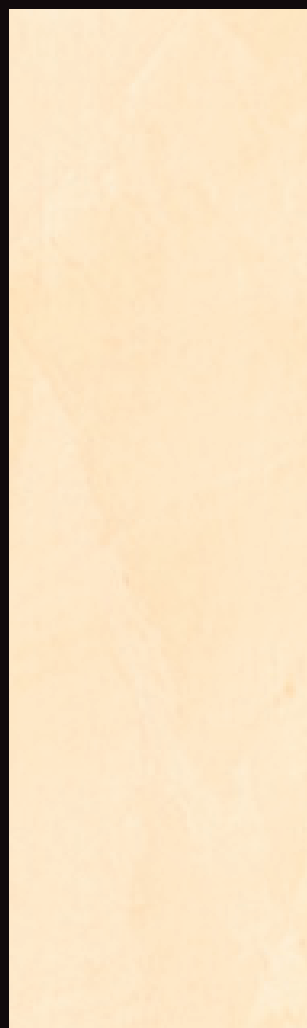
S1 KA



S2 KA

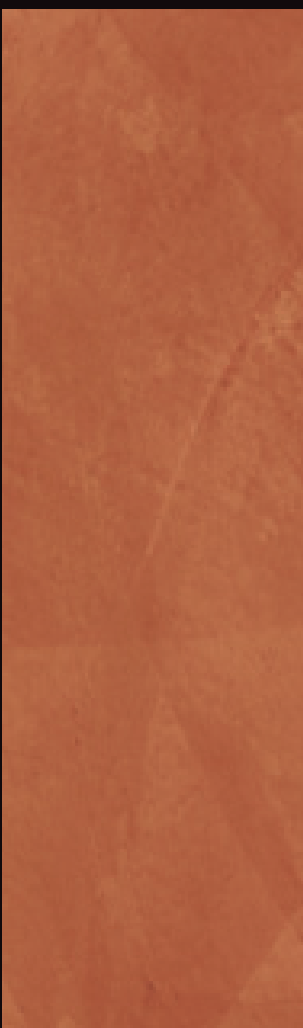


S3 KA

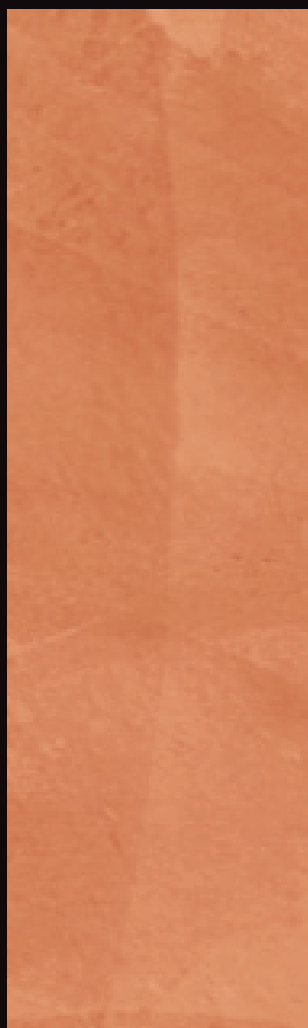


S4 KA

Terra



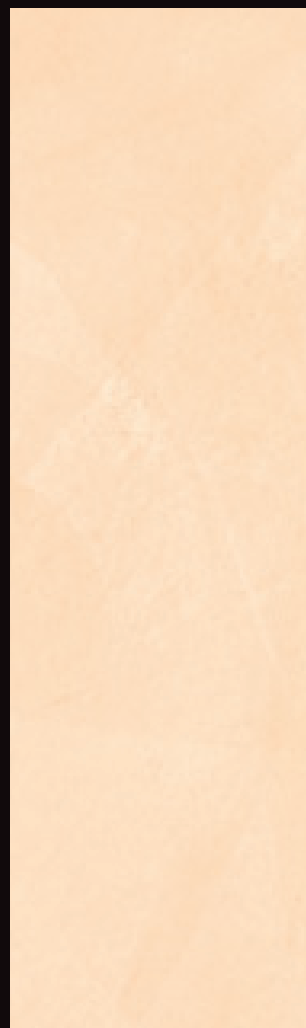
S1 KF



S2 KF



S3 KF



S4 KF

I Colori di Portofino

Rosa



S1 KC



S2 KC



S3 KC



S4 KC

Rosso



S1 KD



S2 KD



S3 KD



S4 KD

I Colori di Portofino

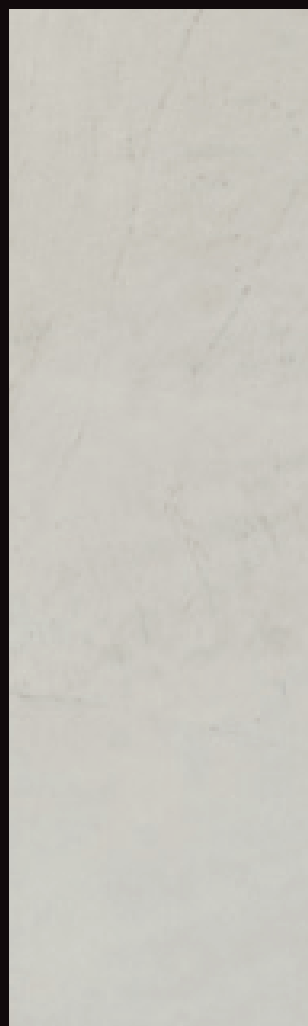
Ardesia



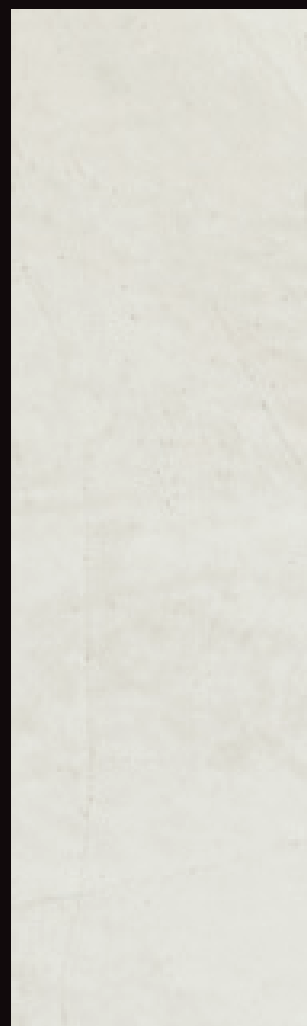
S1 KG



S2 KG

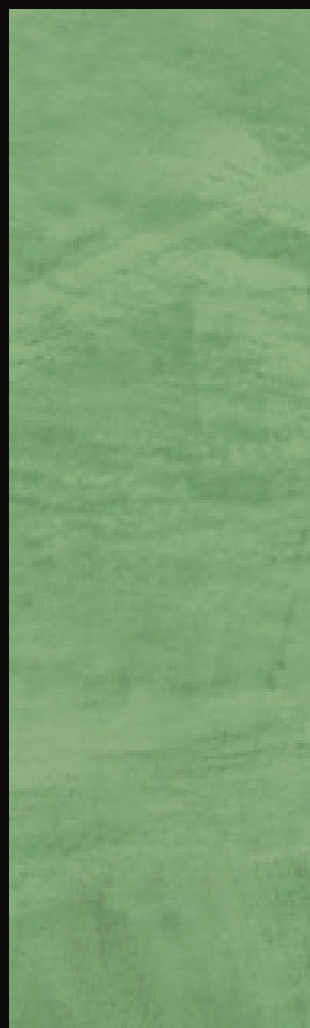


S3 KG

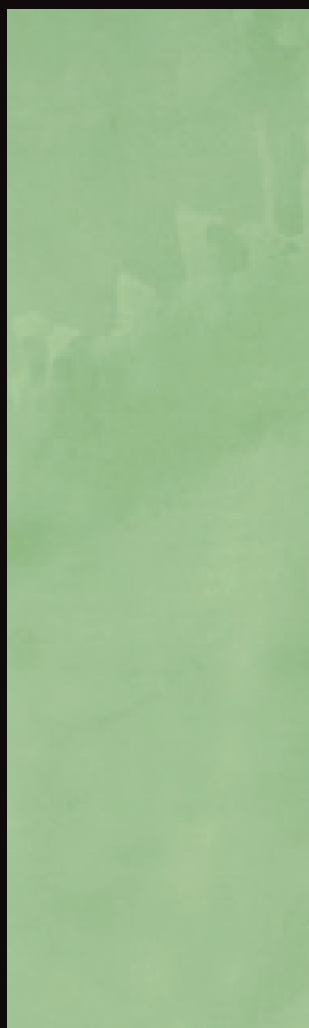


S4 KG

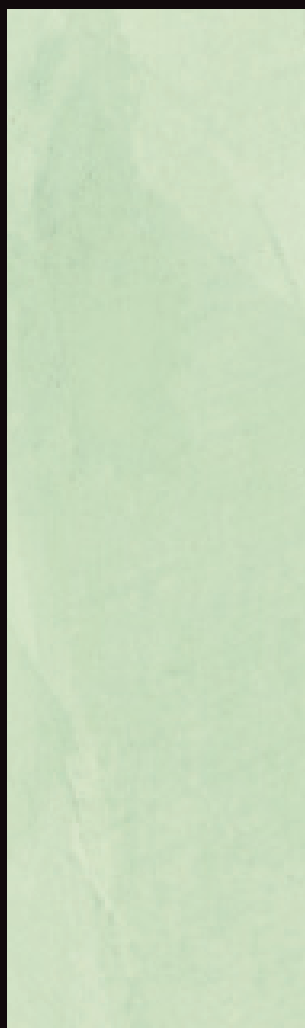
Oliva



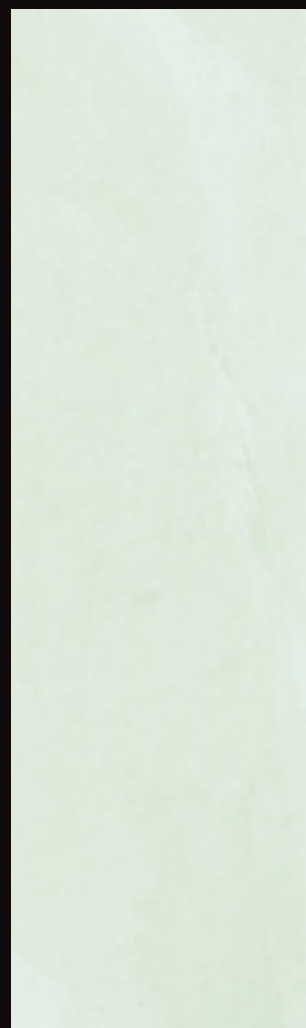
S1 KE



S2 KE



S3 KE



S4 KE

I Colori di Portofino

S1 ZF

S2 ZF



I C O L O R I D E L
S O L E

I Colori del Sole

ZA	ZB	ZC	ZD	ZE	ZF	ZG	
							S1
							S2
							S3
							S4

Colori fotografici ed indicativi - Photographic and suggested colours - Couleurs photographiques et indicatives - Fotografische und hinweisende Farben - Colores fotográficos y sugerencias - Φωτογραφικά και προτεινόμενα χρώματα.



Il Cielo



S1 ZA



S2 ZA



S3 ZA



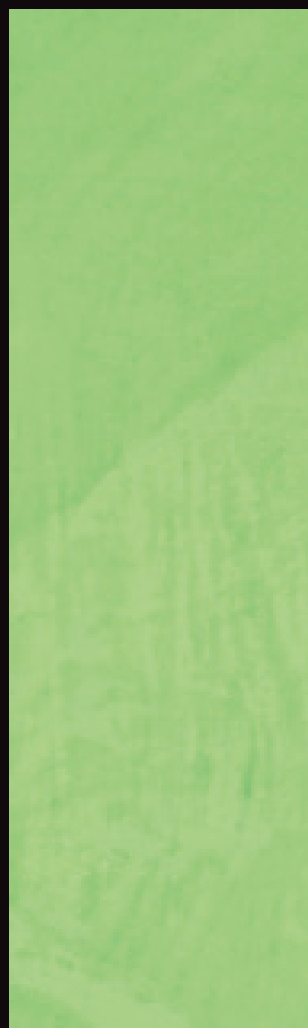
S4 ZA



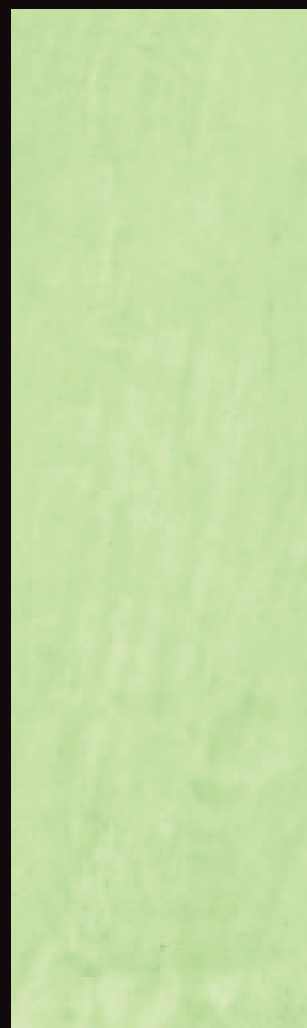
S1 ZB



S2 ZB



S3 ZB



S4 ZB

Il Sole



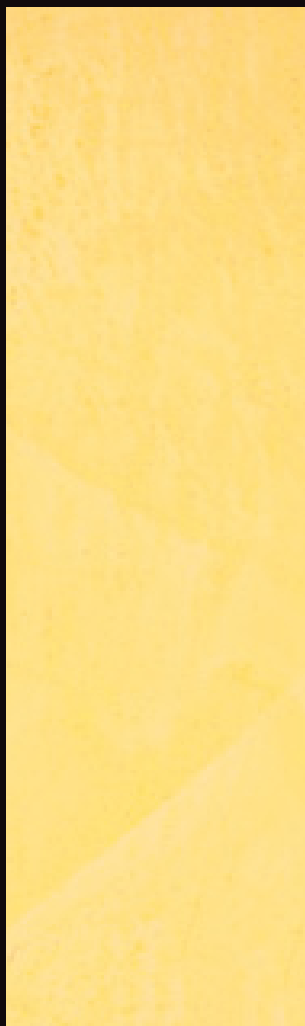
S2 ZC



S1 ZC



S2 ZC



S3 ZC



S4 ZC

I Colori del Sole



S1 ZD



S1 ZD



S2 ZD



S3 ZD

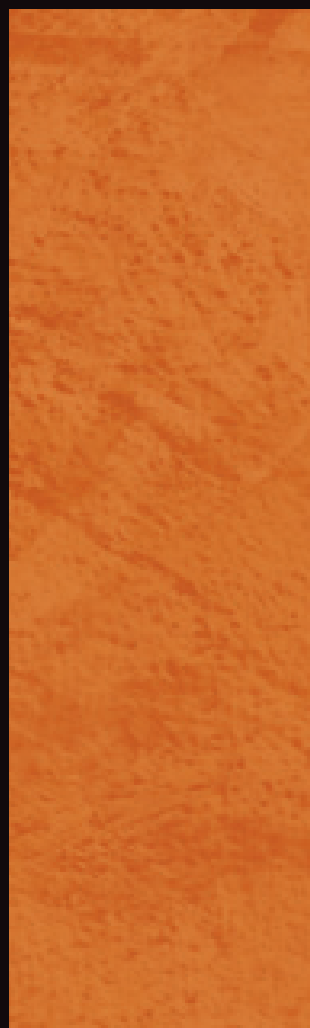


S4 ZD

La Sabbia



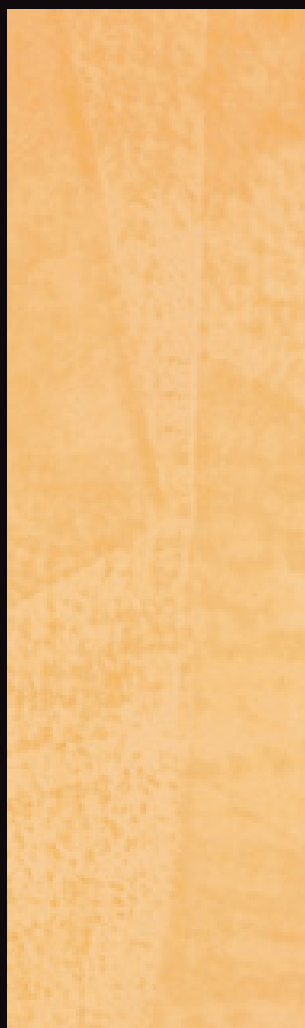
S3 ZE



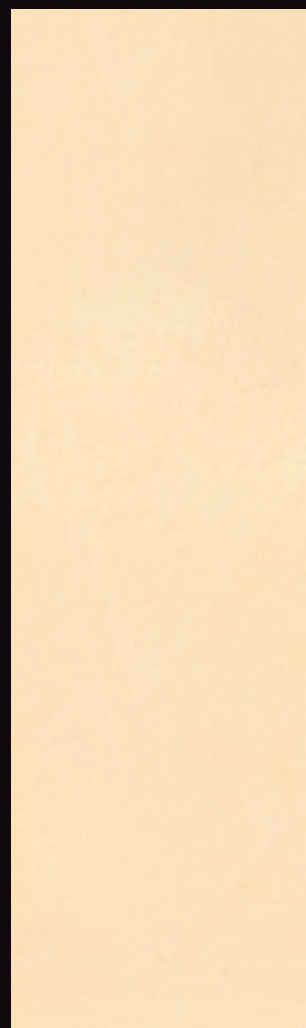
S1 ZE



S2 ZE



S3 ZE

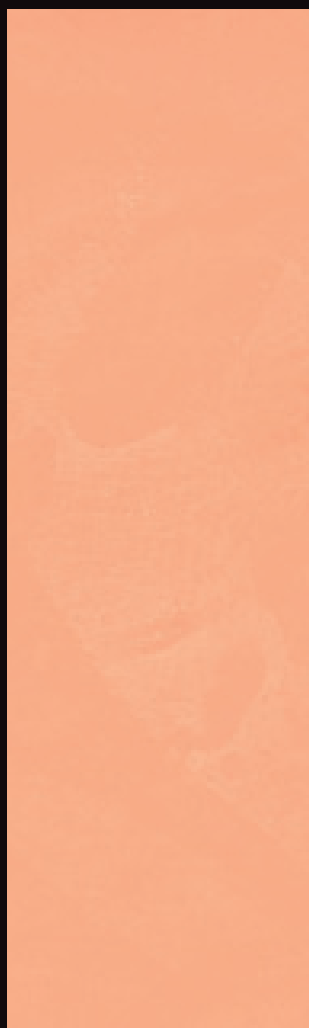


S4 ZE

La Pietra al Sole



S1 ZF



S2 ZF



S3 ZF

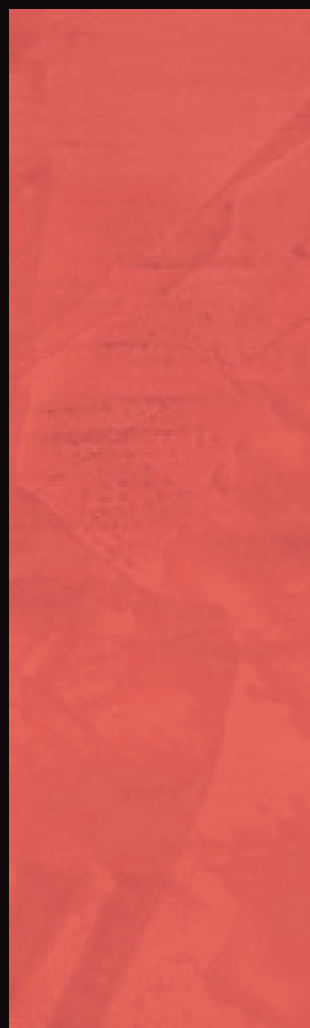


S4 ZF

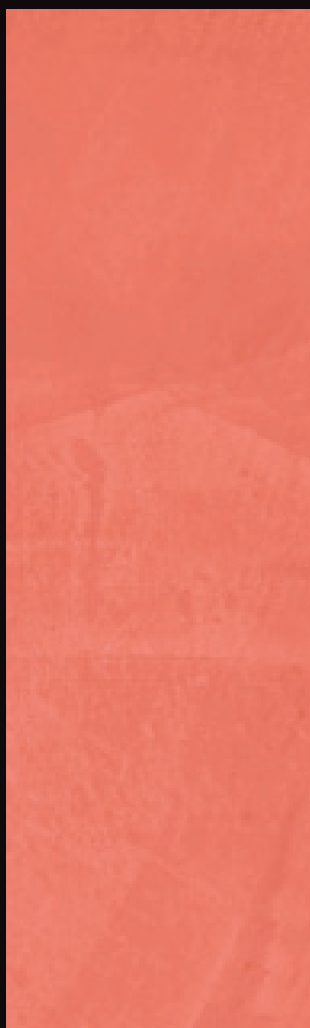
L'Imbrunire



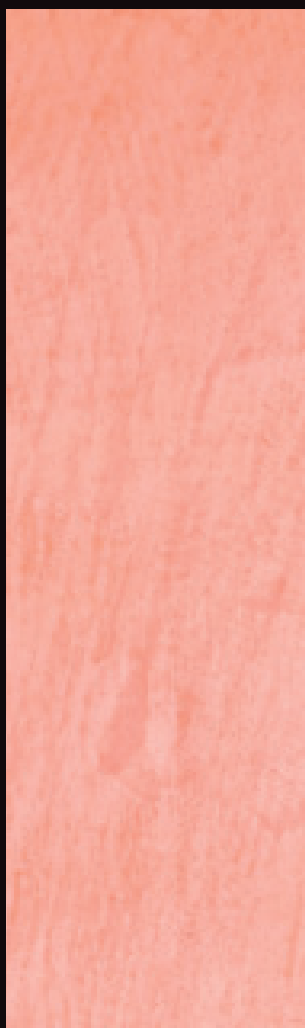
S1 ZG



S1 ZG



S2 ZG



S3 ZG



S4 ZG

I Colori del Sole

S1 NB



I C O L O R I D I
NEW YORK

NA	NB	NS	NL	NR	NO	NY	
							S1
							S2
							S3
							S4

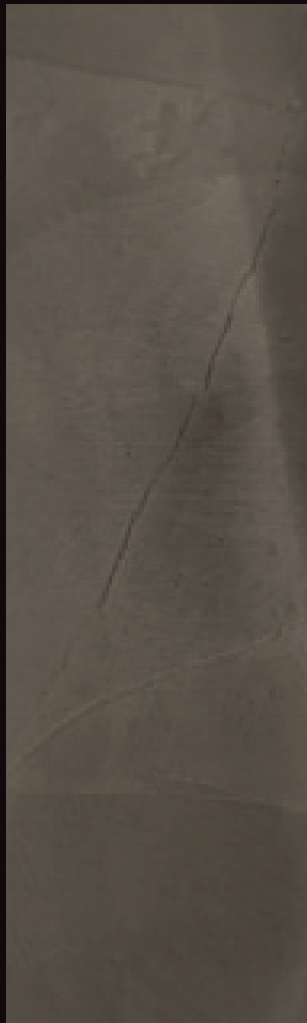
Colori fotografici ed indicativi - Photographic and suggested colours - Couleurs photographiques et indicatives - Fotografische und hinweisende Farben - Colores fotográficos y sugerencias - Φωτογραφικά και προτεινόμενα χρώματα.

I Colori di New York

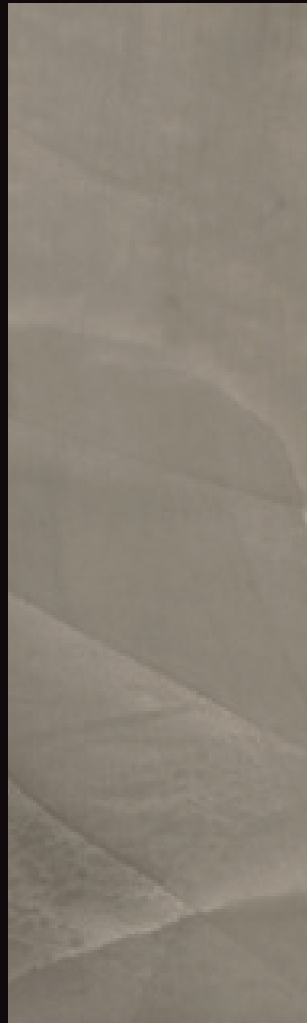
Asphalt



S1 NA



S2 NA



S3 NA



S4 NA

Brown



S3 NB



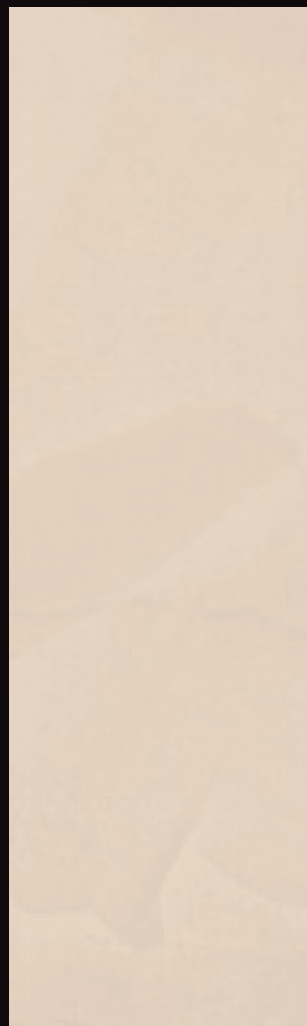
S1 NB



S2 NB



S3 NB



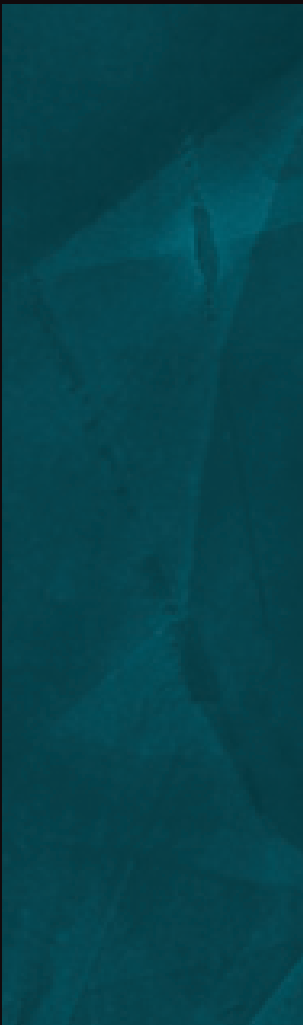
S4 NB

I Colori di New York

Sky



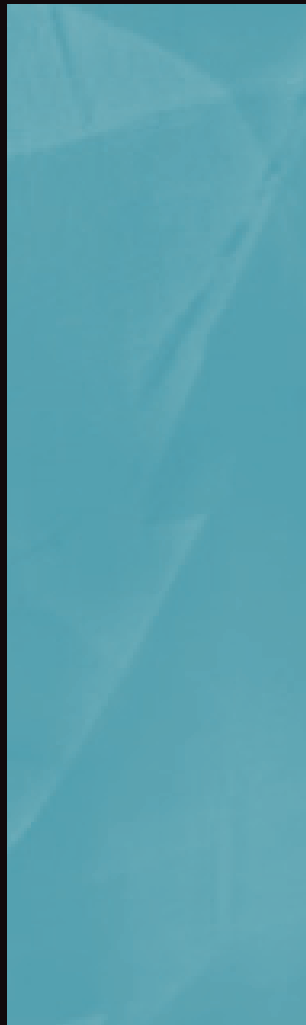
S2 NS



S1 NS



S2 NS

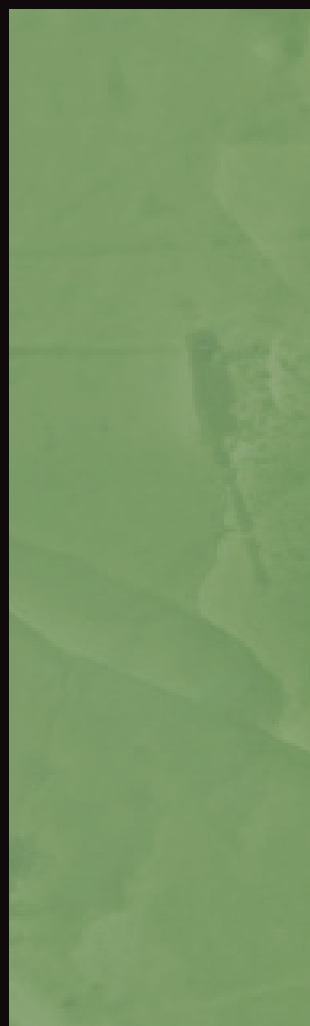


S3 NS



S4 NS

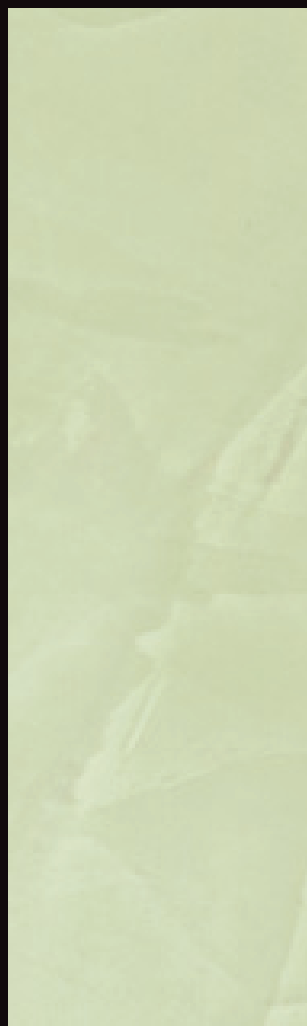
Leaves



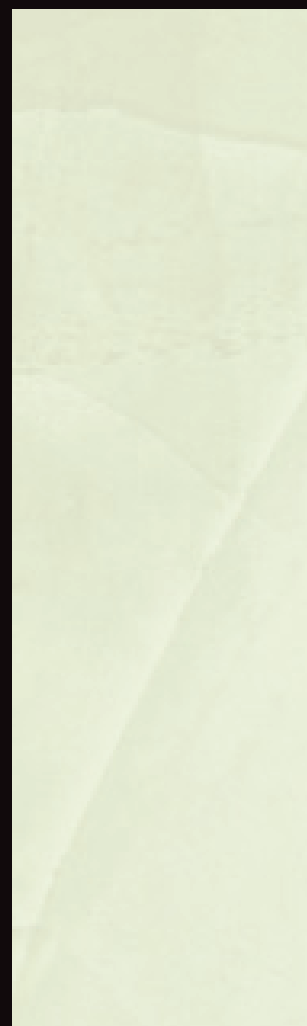
S1 NL



S2 NL



S3 NL

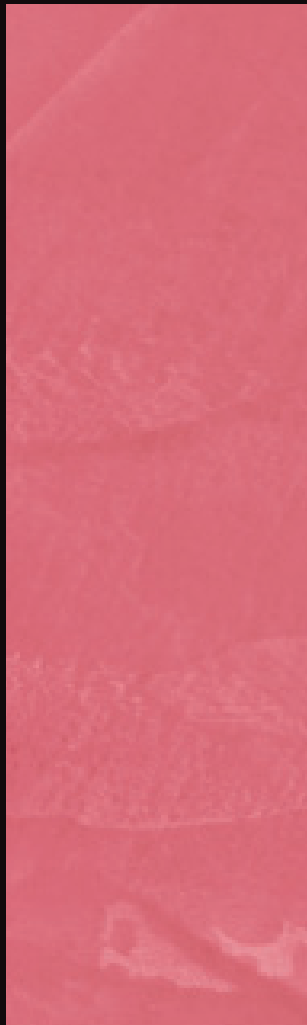


S4 NL

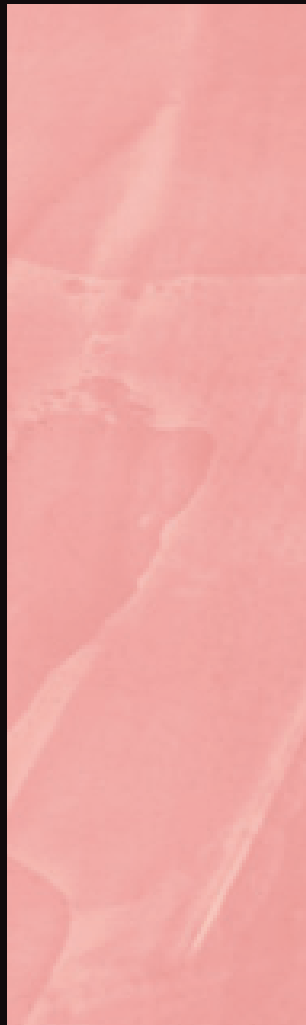
Red



S1 NR



S2 NR

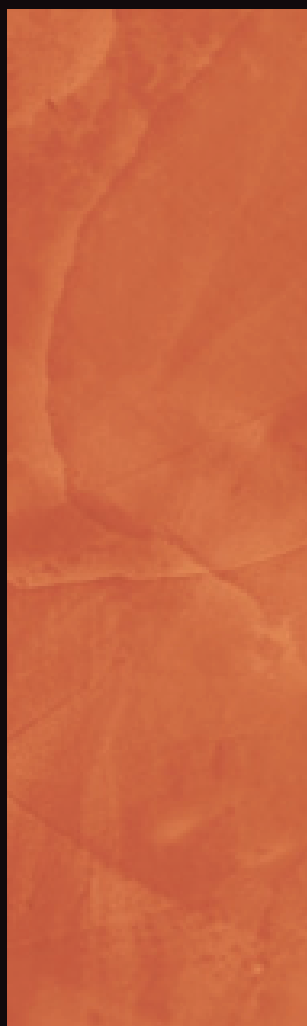


S3 NR

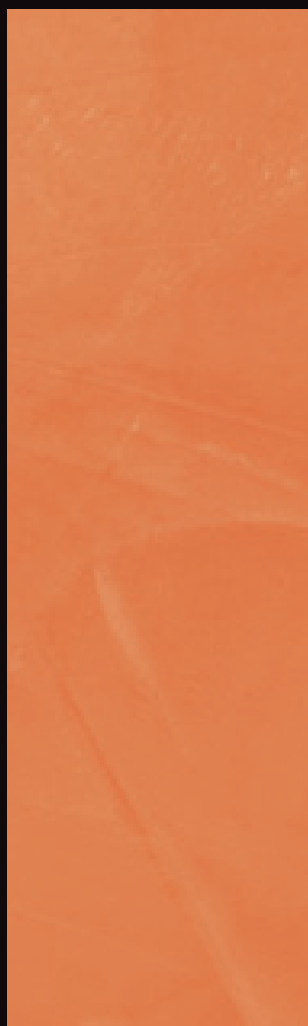


S4 NR

Autumn Orange



S1 NO



S2 NO



S3 NO

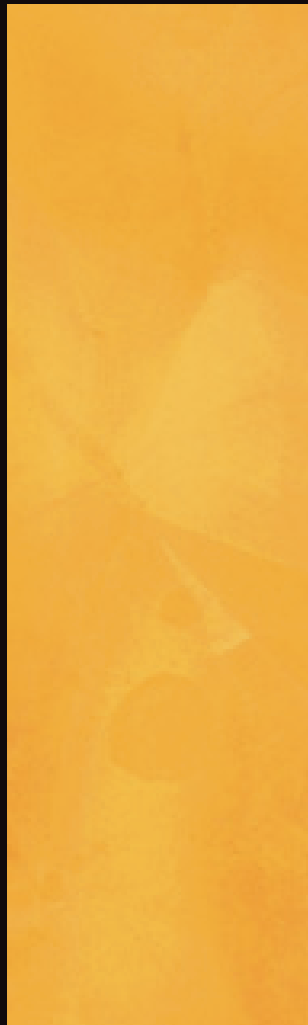


S4 NO

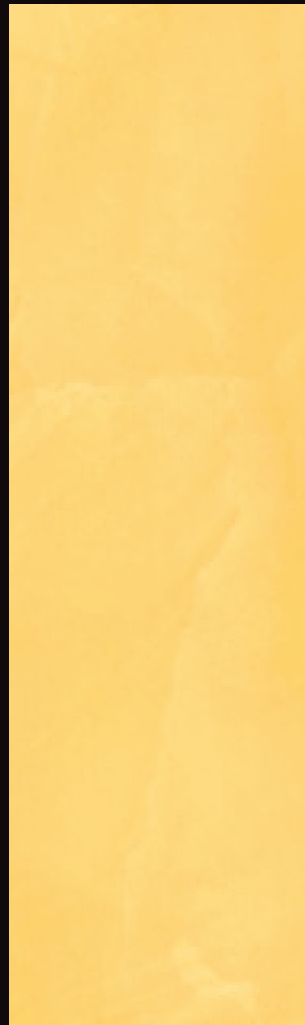
Autumn Yellow



S1 NY



S2 NY



S3 NY

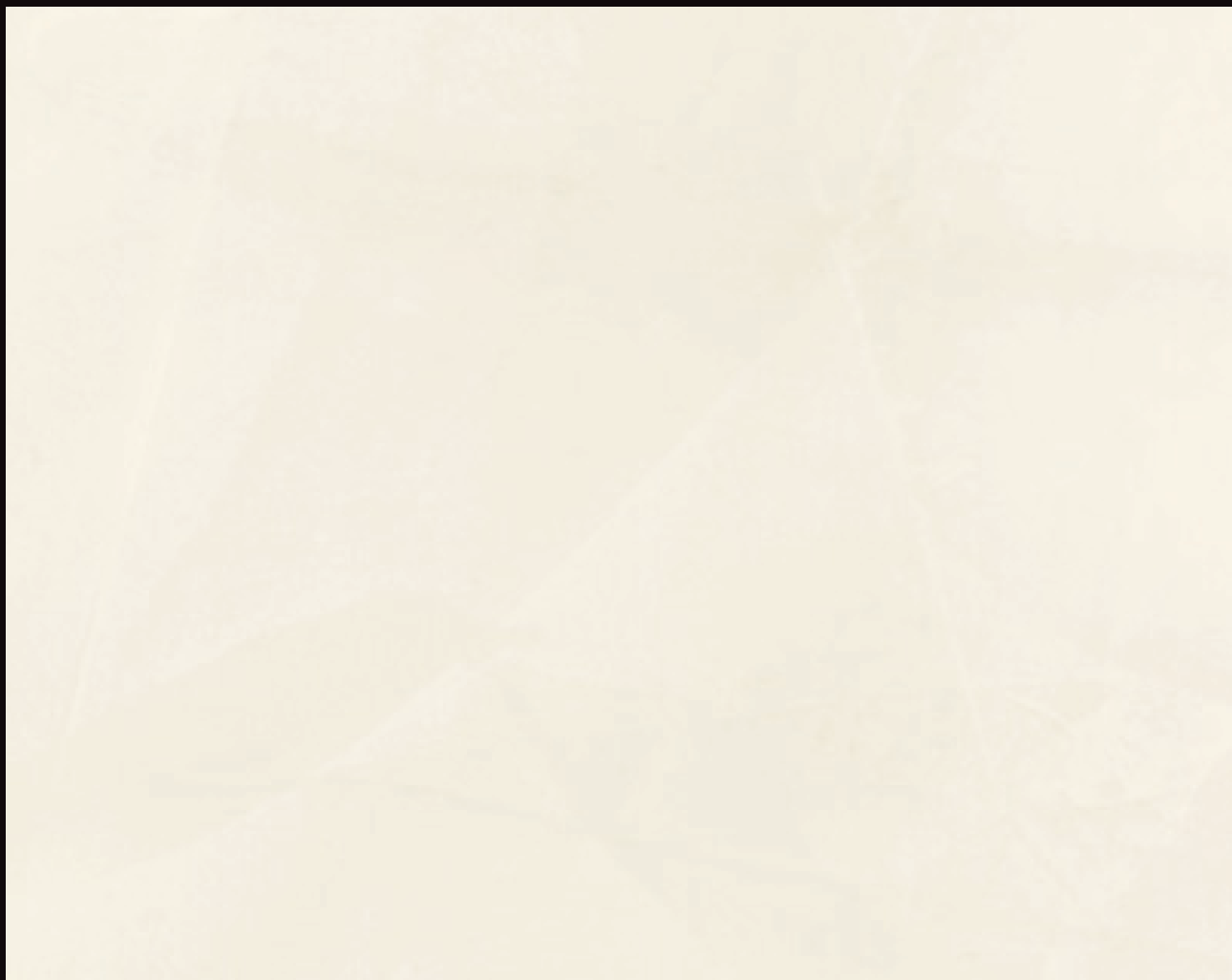


S4 NY

White



White



White



I C O L O R I D I
L O N D R A

SC	SB	SD	SE	SA	SV	SG	
							S1
							S2
							S3
							S4

I Colori di Londra



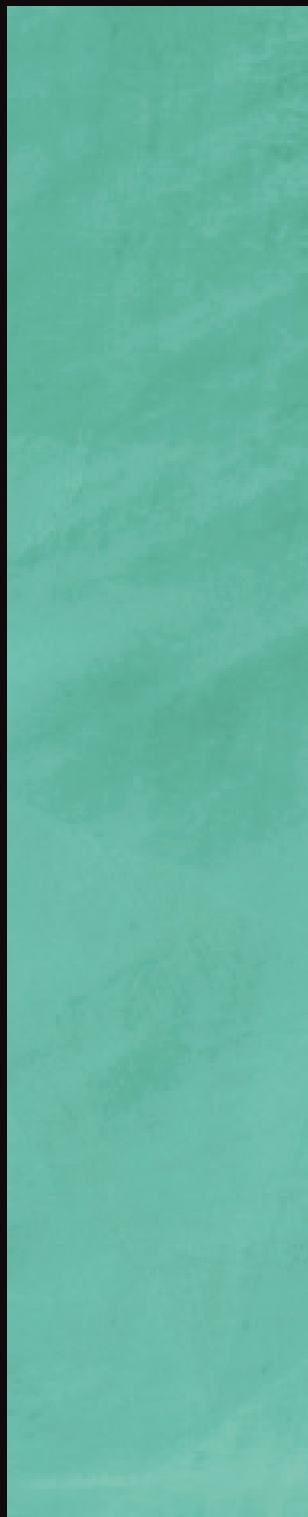
English Green



S1 SD



S2 SD

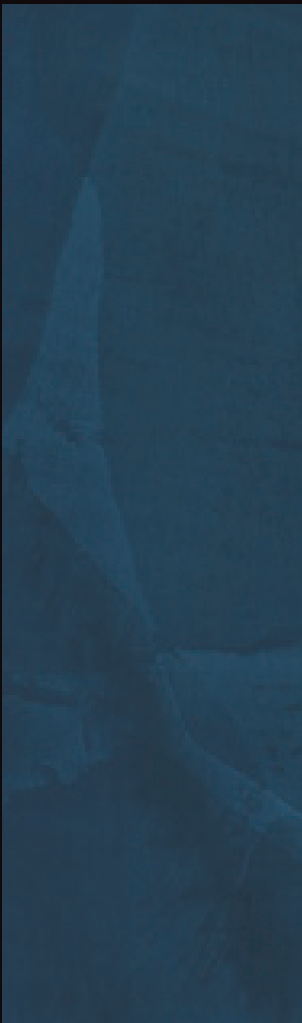


S3 SD



S4 SD

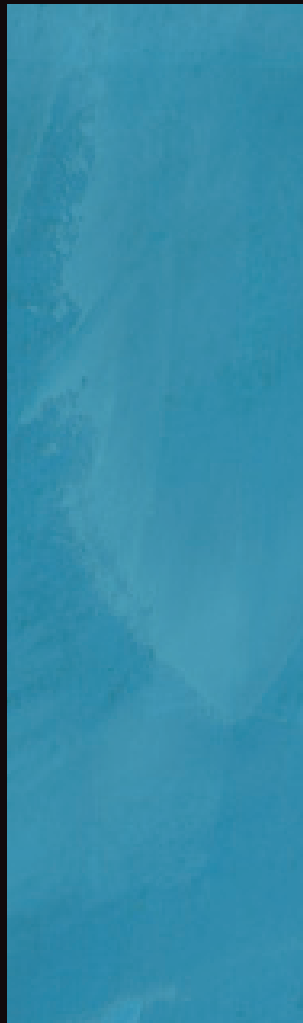
London Blue



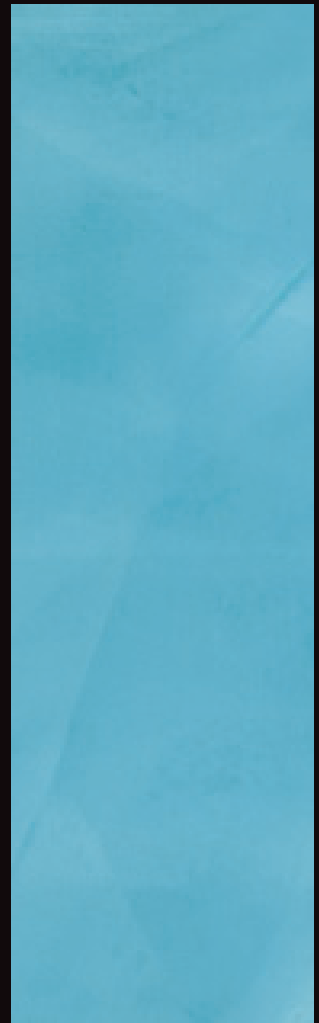
S1 SB



S2 SB

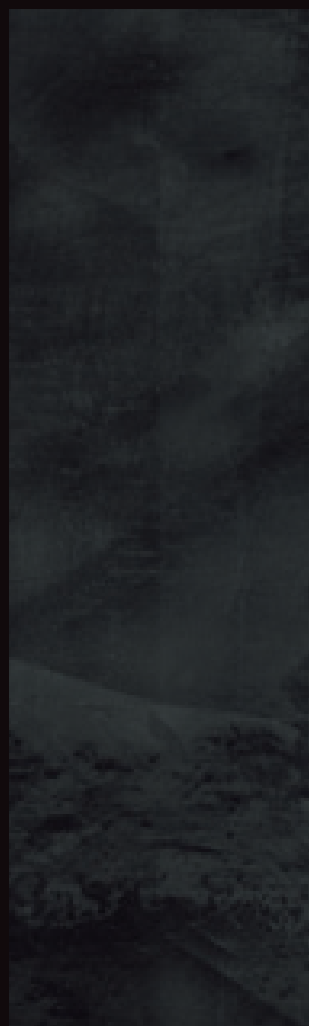


S3 SB

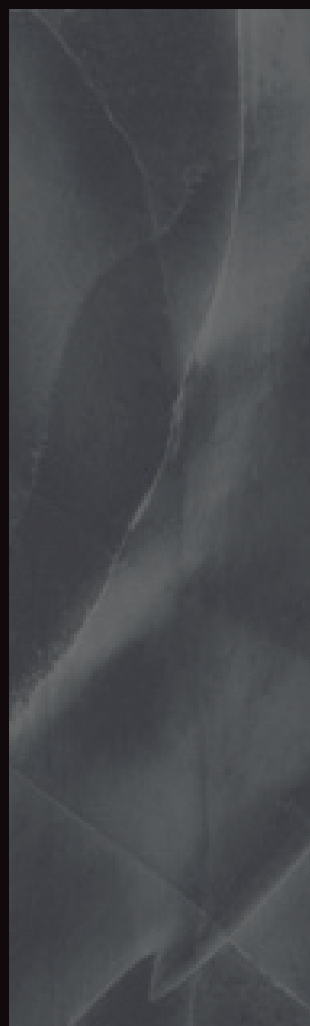


S4 SB

London Black



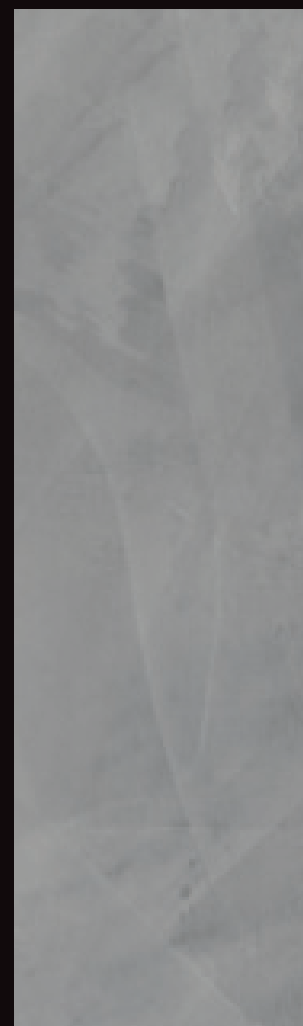
S1 SC



S2 SC



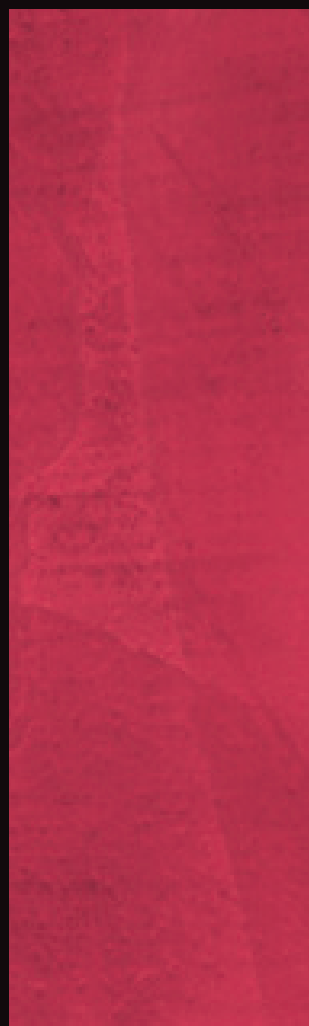
S3 SC



S4 SC

I Colori di Londra

London Red



S1 SE



S2 SE

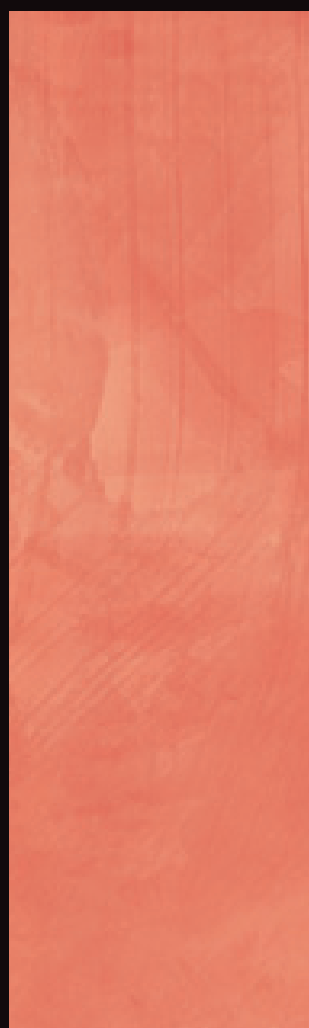


S3 SE

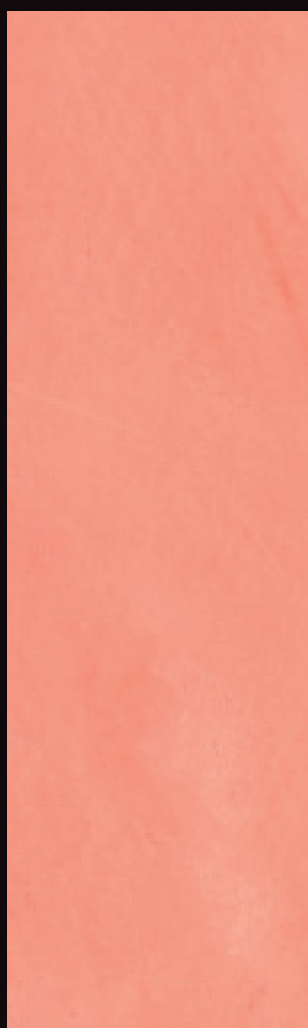


S4 SE

Terra di Kenya



S1 SA



S2 SA



S3 SA



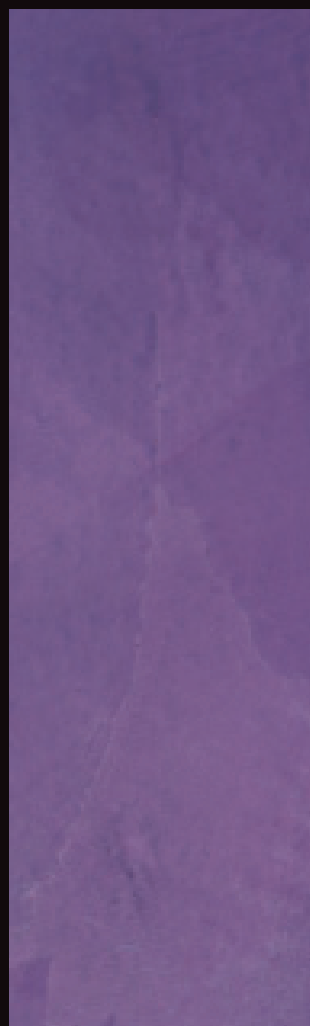
S4 SA

I Colori di Londra

Violet



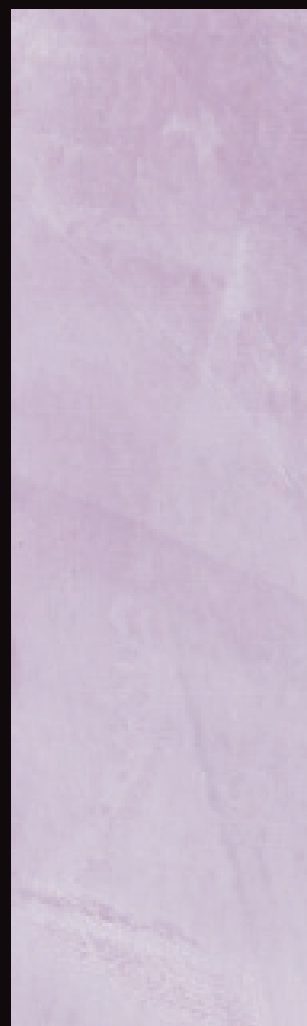
S1 SV



S2 SV



S3 SV



S4 SV

Yellow

S1 SG



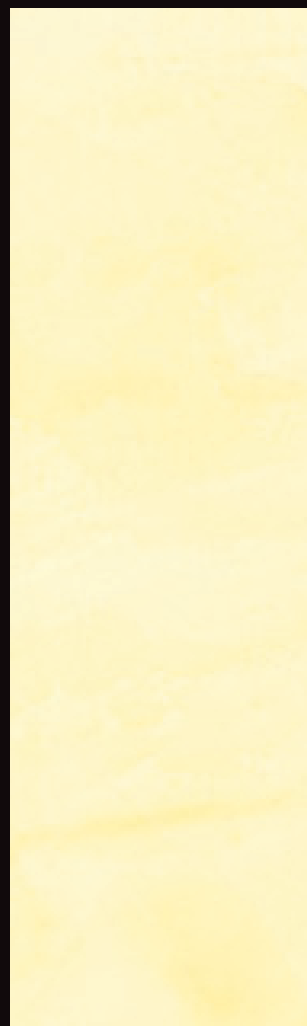
S1 SG



S2 SG



S3 SG



S4 SG



I C O L O R I D E L L '
 A N I M A

AR	AA	AL	AM	AF	AV	AZ	
							S1
							S2
							S3
							S4

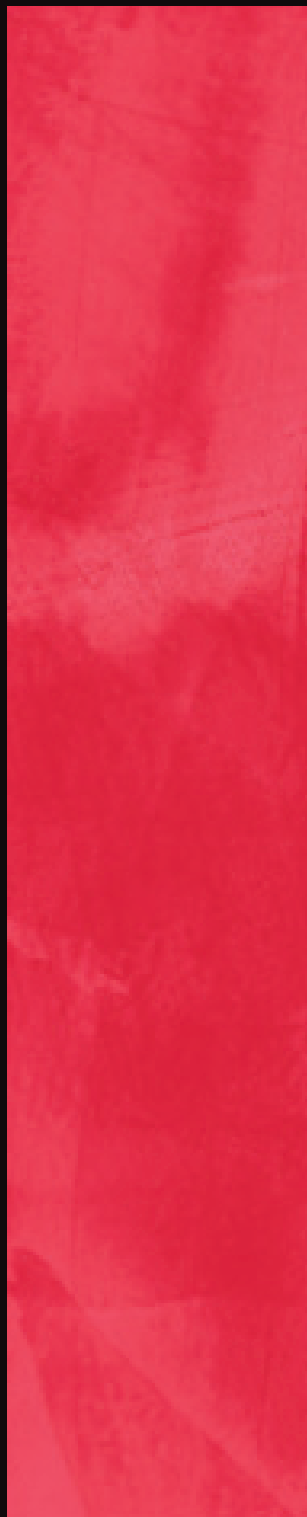
Colori fotografici ed indicativi - Photographic and suggested colours - Couleurs photographiques et indicatives - Fotografische und hinweisende Farben - Colores fotográficos y sugerencias - Φωτογραφικά και προτεινόμενα χρώματα.



Uscire allo Scoperto



S1 AR



S2 AR

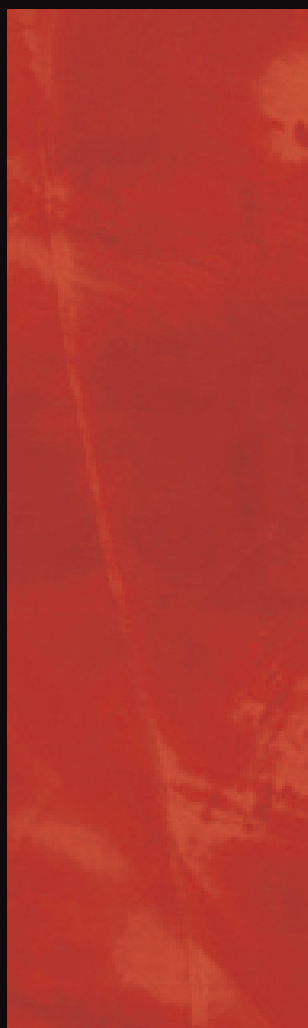


S3 AR



S4 AR

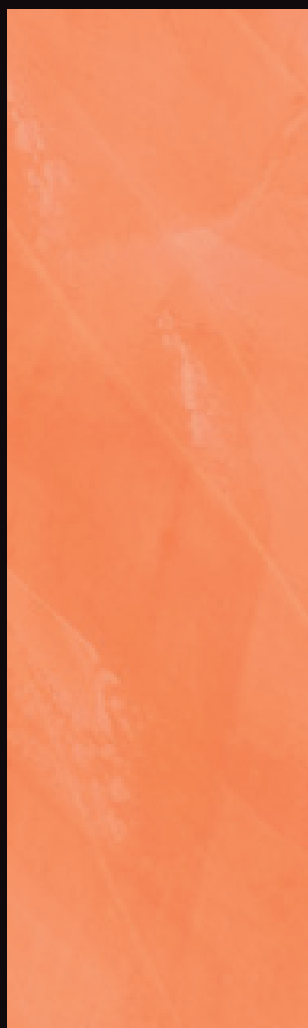
Contemplazione Attiva



S1 AA



S2 AA



S3 AA



S4 AA

La Pace dei Sensi



S1 AL



S2 AL

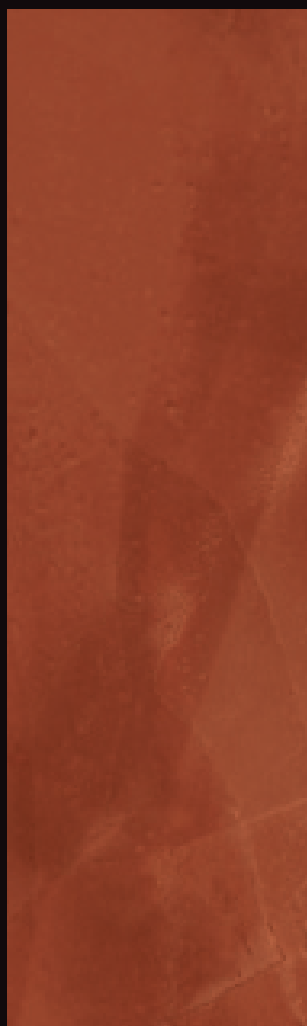


S3 AL



S4 AL

Profumo di Libertà



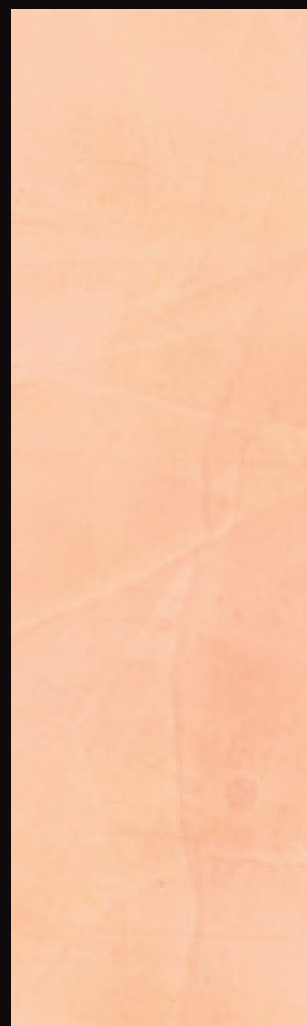
S1 AM



S2 AM



S3 AM

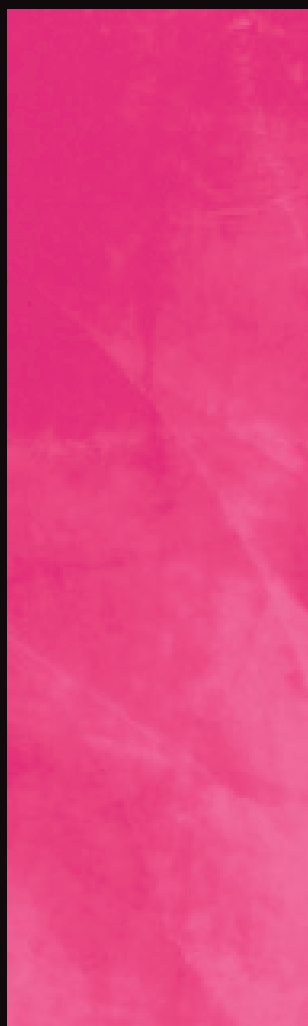


S4 AM

Dolce Accoglienza



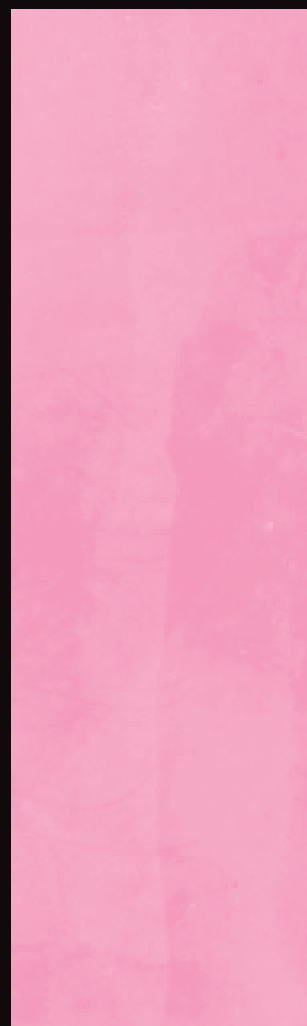
S1 AF



S2 AF

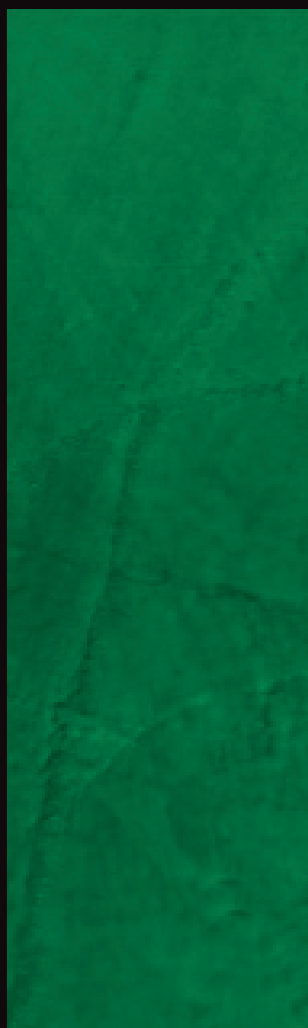


S3 AF



S4 AF

Il Rifugio del Guerriero



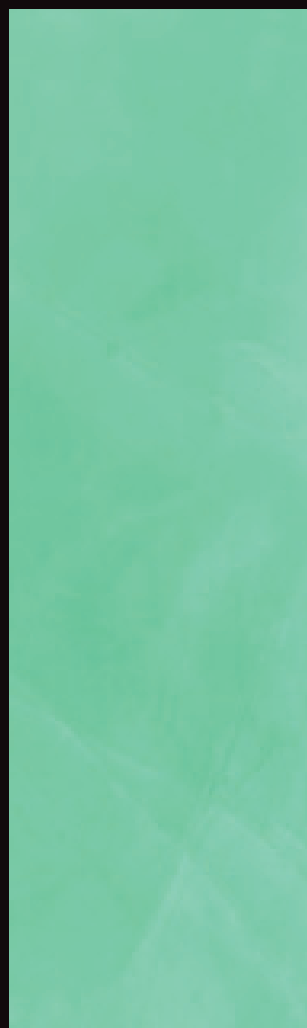
S1 AV



S2 AV

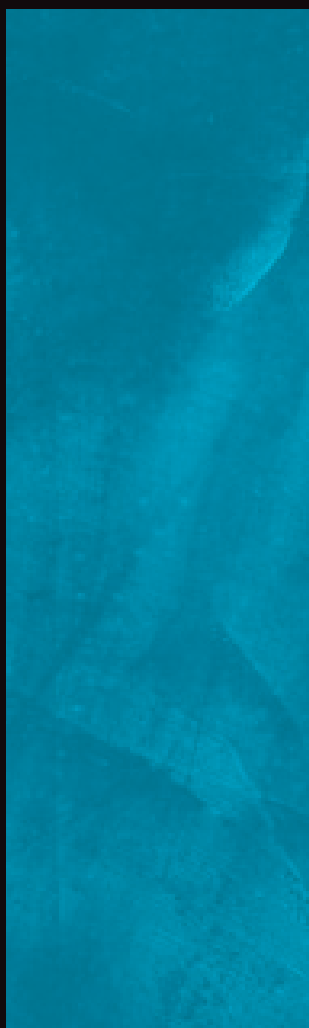


S3 AV

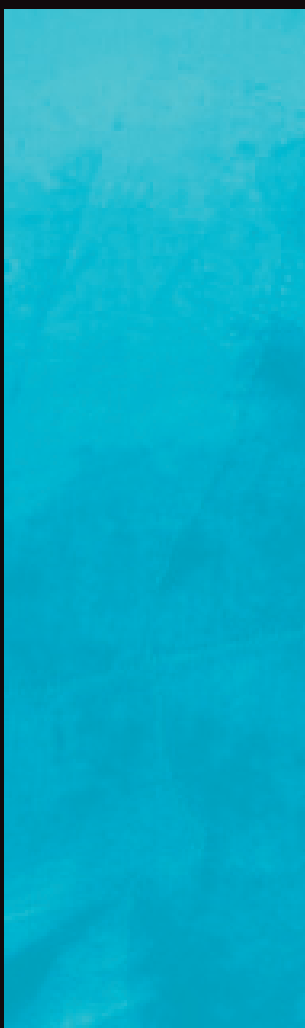


S4 AV

A Perdita d'Occhio



S1 AZ



S2 AZ



S3 AZ



S4 AZ



This is a glossy, natural, high quality stucco that has been seasoned for a lengthy period; marble powders and additives make the product highly adhesive and it flows well when applied, reaching the finished stage very quickly. SPATULA STUHHI breathes extremely well, is alkaline resistant and is an excellent natural anti-mildew and bactericidal product; its constant carbonation process makes it highly resistant to humidity. SPATULA STUHHI is a totally ecological covering and contains no solvents. It is completely water-based and is therefore non-inflammable. Ideal Coverage using 3 Coats: 1 kg m².

WASHABILITY: The product is not washable in its normal version. On the contrary, its best feature is that it can breathe. We recommend protection with Cera del Vecchio in areas where washability is necessary.

REPAINTING: After many years you may decide to replace SPATULA STUHHI either with SPATULA STUHHI itself or with other products. It's very simple, just: - Rub down with sand paper until you have removed the glossy surface. - Apply SPATULA STUHHI again, a water-based paint or any other product, directly without any problem.

DRYING TIME: Treatable after about 12-14 hours at +20 °C (273 K) and with a relative humidity of 65%. Totally dry after 28 days.

CONSERVATION: In a dry, cool place, away from the frost and humidity.

SAFETY REGULATIONS: Protect the eyes and skin from splashing with the product.

COVERAGE: SPATULA STUHHI Primus Naturale 6/7 m² per litre - SPATULA STUHHI 1 kg/m².

È uno stucco lucido, naturale, a lunga stagionatura, di grande qualità; polveri di marmo ed additivi conferiscono al prodotto alta adesione al supporto ed ottima scorrevolezza al momento dell'applicazione, raggiungendo la finitura rapidamente. SPATULA STUHHI consente la massima traspirabilità, resiste all'aggressione alcalina e per sua natura è un ottimo antimuffa nonché battericida; il suo continuo processo di carbonatazione assicura un'ottima resistenza all'umidità. SPATULA STUHHI è un rivestimento assolutamente ecologico e non contiene solventi. Completamente all'acqua quindi per sua natura non infiammabile. Consumo ideale nelle 3 Mani: 1 kg per mq.

LAVABILITÀ: Il prodotto nella sua versione normale non è lavabile. Anzi, la sua migliore caratteristica è la traspirabilità. In aree ove sia necessaria la lavabilità consigliamo la protezione con Cera del Vecchio.

RIVERNICIATURA: Dopo molti anni si potrà decidere di sostituire SPATULA STUHHI o con SPATULA STUHHI stesso o con altri prodotti. È molto semplice, ecco cosa fare: Carteggiare adeguatamente fino ad eliminare la lucidità superficiale. Applicare direttamente ancora SPATULA STUHHI od idropitture o altro senza alcun problema.

TEMPO DI ASCIUGATURA: Trattabile dopo ca. 12-14 ore a +20 °C (273 K) e con un'umidità relativa del 65%. Asciugatura totale dopo 28 giorni.

CONSERVAZIONE: In luogo secco, fresco, al riparo dal gelo e dall'umidità.

NORME DI SICUREZZA: Proteggere gli occhi e la pelle da spruzzi del prodotto.

CONSUMI: SPATULA STUHHI Primus Naturale 6/7 MQ./Litro - SPATULA STUHHI 1 kg, per mq.

Es un estuco lúcido, natural, de larga curaci3n y de alta calidad; polvos de mármol y aditivos dan al producto una gran adherencia al soporte y una 3ptima fluidez en el momento de la aplicaci3n, obteniendo el acabado rapidamente. permite la máxima transpirabilidad, resiste la agresi3n alcalina y por su naturaleza es un 3ptimo antimoho además de bactericida; su proceso continuo de carbonataci3n asegura una excelente resistencia a la humedad. Es un revestimiento totalmente ecol3gico y no contiene disolventes. Está compuesto complementamente de agua por lo tanto no inflamable. Consumo ideal en las 3 Manos: 1 kg per m².

LAVADO: el producto en su versi3n normal no es lavable. Es más, su mejor característica es la transpirabilidad. En zonas donde sea necesario el lavado recomendamos la protecci3n con Cera del Vecchio.

VOLVER A BARNIZAR: después de muchos años se podrá decidir substituir con la misma o con otros productos. Es muy sencillo. E aquí que se debe hacer: lijar adecuadamente hasta eliminar la lucidez superficial, aplicar directamente de nuevo SPATULA STUHHI, pintura al agua u otro sin ningún problema.

TIEMPO DE SECADO: tratable después de 12-14 horas aproximadamente a +20°C (273 K) y con una humedad relativa del 65%. Secado total después de 28 días.

CONSERVACI3N: en un lugar seco, fresco, a resguardo del hielo y de la humedad.

NORMAS DE SEGURIDAD: proteger los ojos y la piel de las salpicaduras del producto.

CONSUMOS: Primus Naturale 6/7 metros cuadrados cada litro - 1 kg por metro cuadrado.



Come una pietra naturale o come un marmo levigato Spatula Stuhhi risponde alle provocazioni della luce ed emana una specifica vibrazione per ogni tipo di illuminazione che riceve. Come una pietra naturale o come un marmo levigato Spatula Stuhhi si fa penetrare dalla luce, ne trattiene una qualità e ne riflette un'altra. Con Spatula Stuhhi osserviamo quindi un colore che cambia con il passare delle ore della giornata e con le diverse attività che le caratterizzano e NOI sperimentiamo la sensazione di un ambiente in movimento, attivo, vivo, mutevole. Esattamente come la Natura che ci ricorda in ogni istante in cui mai nulla è uguale, neanche a se stesso, quando è a contatto con il tempo, l'energia, la luce. **Questa è la caratteristica unica delle cose vive, animate, naturali: cambiano, comunicano e trasmettono Emozioni.**

Cera del Vecchio

Una antica miscela di Cera e Saponi, amalgamata naturalmente a caldo, dà a Spatula Stuhli il sapore e la trasparenza del Marmo Levigato. La Cera del Vecchio viene applicata a mano con un panno ed aumenta notevolmente la resistenza e lavabilità della superficie.

Es handelt sich um eine glänzende, natürliche Spachtelmasse mit einer langen Ablagerung und einer großen Qualität; Marmorstaub und Zusatzstoffe verleihen dem Produkt eine hohe Haftung an der Unterlage und eine hervorragende Fleckkraft, im Moment, in dem dieses aufgetragen wird, und ermöglichen eine schnelle Feinverarbeitung. SPATULA STUHHLI ermöglicht eine maximale Transpiration, widersteht einer alkalischen Aggression und ist wegen dessen Natur ein hervorragendes schimmelverhütendes und bakterizides Mittel; dessen andauernder Kohlesäuresättigungsprozess garantiert für einen hervorragenden Widerstand gegenüber Feuchtigkeit. SPATULA STUHHLI ist ein absolut umweltfreundlicher Überzug und enthält keine Lösungsmittel. Vollkommen auf Wasserbasis und daher seiner Natur wegen nicht entflammbar. Idealer Verbrauch bei 3 Anstrichen: 1 Kg pro Qm. WASCHBARKEIT: Das Produkt ist in dessen normalen Version nicht waschbar. Im Gegenteil ist dessen beste Eigenschaft dessen Kapazität zu transpirieren. In Bereichen, in denen eine Waschbarkeit notwendig ist, empfehlen wir einen Schutz mit del Vecchio Wachs. WIEDERANSTRICH: Nach vielen Jahren kann es sein, dass man SPATULA STUHHLI entweder mit SPATULA STUHHLI selbst oder mit anderen Produkten ersetzen möchte. Dies ist sehr einfach; folgendes ist zu tun: - Auf geeignete Weise abschmirgeln bis man die oberflächliche Leuchtkraft beseitigt hat. - Nochmals SPATULA STUHHLI oder Dispersionsfarben oder andere ohne jegliche Probleme direkt auftragen. TROCKNUNGSZEIT: Nach circa 12-14 Stunden bei +20°C (273 K) und mit einer relativen Feuchtigkeit von 65% behandelbar. Vollkommene Trocknung nach 28 Tagen. KONSERVIERUNG: In einem trockenen Bereich, vor Frost und Feuchtigkeit geschützt. SICHERHEITSNORMEN: Die Augen und die Haut vor Produktspritzern schützen. VERBRAUCH: SPATULA STUHHLI Primus Naturale 6/7 Quadratmeter je Liter - SPATULA STUHHLI 1 kg je Quadratmeter.

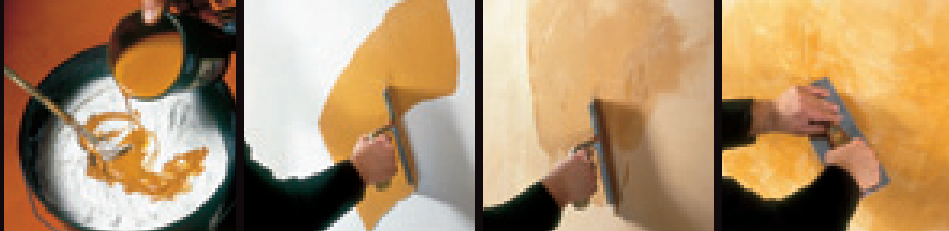
C'est un mastic brillant, naturel, à séchage long, de grande qualité; des poudres de marbre et des additifs donnent à ce produit une excellente adhésion au support, et une fluidité optimale au moment de l'application, tout en permettant de parfaire la finition rapidement. SPATULA STUHHLI permet le maximum de transpirabilité, il résiste à l'agression alcaline, et de par sa nature il combat efficacement la moisissure et les bactéries; le processus continu de carbonatation garantit une excellente résistance à l'humidité. SPATULA STUHHLI est un revêtement absolument écologique; il ne contient aucun solvant. Il est fait complètement à l'eau, et est donc de par sa nature non inflammable. Consommation idéale en 3 couches: 1 kg par m². LAVABILITE: Dans sa version normale, ce produit n'est pas lavable. Au contraire, sa qualité principale est la transpirabilité. Sur les surfaces où la lavabilité est nécessaire, nous vous conseillons de protéger avec la Cera del Vecchio. REPEINTURE: Après beaucoup d'années, vous pourrez décider de remplacer SPATULA STUHHLI par un autre SPATULA STUHHLI ou par d'autres produits. C'est très simple, voilà comment faire: poncer de façon adéquate pour éliminer le brillant superficiel, appliquer directement à nouveau SPATULA STUHHLI, ou bien des peintures à l'eau ou un autre produit, sans aucun problème. TEMPS DE SECHAGE: La surface peut être traitée après environ 12-14 heures à +20°C (273 K) et avec une humidité relative de 65%. Séchage total en 28 jours. CONSERVATION: Dans un endroit sec, frais, à l'abri du gel et de l'humidité. NORMES DE SECURITE: Protéger les yeux et la peau contre toute éclaboussure du produit. CONSOMMATIONS: SPATULA STUHHLI Primus Naturale 6/7 m² chaque litre - SPATULA STUHHLI 1 kg/m².

Αυτό είναι ένα φυσικό, γυαλιστερό, υψηλής ποιότητας stucco που έχει ωριμάσει για ένα μεγάλο χρονικό διάστημα. Πολύ λεπτά στοιχεία λευκού μαρμάρου και άλλα πρόσθετα κάνουν το προϊόν ιδιαίτερα κολλητικό και ρευστό κατά την εφαρμογή, φτάνοντας στο τελικό στάδιο πολύ γρήγορα. Το SPATULA STUHHLI αναπνέει εξαιρετικά καλά, είναι αλκαλικά ανθεκτικό και είναι ένα άριστο φυσικό αντιμυκηλικό και βακτηριοκτόνο προϊόν. Η διαρκής διαδικασία αναθράκωσης του το καθιστά εξαιρετικά ανθεκτικό στην υγρασία. Το SPATULA STUHHLI είναι ένα απόλυτα οικολογικό προϊόν και δεν περιέχει διαλύτες. Είναι προϊόν με βάση το νερό συνεπώς, μη εύφλεκτο. Ιδανική Κάλυψη σε 3 στρώματα: 1 kg ανα m². Πλύση: Το προϊόν δεν πλένεται στην κανονική του μορφή. Αντιθέτως, το καλύτερο χαρακτηριστικό γνώρισμα είναι ότι μπορεί να αναπνεύσει. Στις περιοχές όπου είναι απαραίτητη η πλύση ή αν έρχεται σε συνεχή επαφή με το νερό σας συνιστούμε την προστασία του με το κέρι προστασίας Cera del Vecchio. Επαναβαφή: Μετά από πολλά χρόνια μπορεί να αποφασίσετε να αντικαταστήσετε το SPATULA STUHHLI είτε με SPATULA STUHHLI ή με άλλα προϊόντα. Είναι πολύ απλό, απλά: - Τρίψτε με γυαλόχαρτο μέχρι η επιφάνεια να χάσει την γυαλάδα της. Εφαρμόστε SPATULA STUHHLI και πάλι, άλλο χρώμα με βάση το νερό ή οποιοδήποτε άλλο προϊόν, άμεσα χωρίς κανένα πρόβλημα. Χρόνος στεγνώματος: στεγνό μετά από περίπου 12-14 ώρες στους +20 ° C (273 K) και με μια σχετική υγρασίας 65%. Τελειώσ στεγνό μετά από 28 ημέρες. Συντήρηση: Σε ένα στεγνό, δροσερό μέρος, μακριά από παγετό και υγρασία. Κανονισμοί ασφαλείας: Προστατέψτε τα μάτια και το δέρμα από το πιτσάλισμα με το προϊόν. Κάλυψη: Ασπίδα SPATULA STUHHLI Primus Naturale 6/7 m²/l - SPATULA STUHHLI 1 kg/m².

玉采泥是一种经由多年实践改善的质地光滑、环保自然、品质高端的产品；该产品由大理石精研粉末和各种添加剂组成，具有高附着力及流动性的特质，较易干燥。玉采泥的透气性极佳，是一种防毒抗碱的产品；其恒定的碳酸饱和加工过程可使墙面高度防潮。玉采泥是完全生态环保的水性产品。不可燃。理想涂层建议3层：1 kg/m²。清洗：该产品在常态下不可擦拭清洗。因其透气性极佳的特点，我们建议可在其表面涂上蜂蜡加以保护以使墙面可擦拭清洗。更换：一种墙面风格经过一段时间使用后您也许会考虑更换。玉采泥墙面的更换十分简易，仅需：用砂纸将光滑的表面稍做打磨后即可直接施用玉采泥或者其他产品。干燥时间：室温20°C (273K)，湿度65%下需12-14小时。完全干透需28天。保存方法：该产品应当放置于干燥、阴凉、防冻、防潮处储存。安全守则：避免该产品倾溅到眼睛及皮肤。建议涂层厚度：粗底料6/7 平方米/升。——玉采泥涂料1千克/平方米。

S P A T U L A

STUHHI



CONSUMI: Primus Naturale: 6/7 mq/l
Spatula Stuhhi: 1 kg/mq
Cere: 20/30 g/mq

ESSICAZIONE: Trattabile dopo ca. 12-14 ore a +20°C (273 K) e con un'umidità relativa del 65%. Asciugatura totale dopo 28 giorni.

CONFEZIONI: 2, 8, 24 kg

PESO SPECIFICO: 1,56 kg/l

CONTENUTO VOC: massimo 20 g/l

S1: 1001/8 + 0,750 Colore
S2: 1001/24 + 0,750 Colore
S3: 1001/8 + 0,062 Colore
S4: 1001/24 + 0,062 Colore

Preparazione:
Primus Naturale

Applicazione:
con 3 passaggi di spatola

Il video applicativo è disponibile su
www.giorgiograesan.it/video/spatulastuhhi

GIORGIO GRAESAN
and Friends

GIORGIO GRAESAN
and Friends