

## Frame anchor type RA-P



### Cross references

Bit hexalobular TX30  
 Hammer drill SDS plus®  
 Precision drill bit HSS

### Application range

- > Direct fastening of plastic windows in masonry and concrete, without any anchors
- > Efficient spaced fixing of windows and doors
- > Installation according to the RAL quality association guidelines for windows and doors

### Properties

- > Burglar-resistant (RC2), tested on steel-free plastic windows
- > Tested as fastening element according to the ETB guidelines "Building components which protect against falling from heights"
- > Reduced forming moulding and exact fit due to perfect thread geometry
- > Fast installation, reliable anchoring
- > Including white RAL 9010 push-on caps
- > Case-hardened steel
- > In the case of steel-reinforced windows, it is possible to dispense with pressure-resistant backing at the sides

### Installation process

- > Drill Ø 6.2 mm frame holes, in-plant or on site, spacing acc. to RAL quality assessment
- > Align frame thoroughly in masonry opening
- > Drill holes into stone, for Ø refer to table, drill hole depth = installation depth + 10 mm
- > Fasten the EJOT frame anchors
- > Push on cap if necessary

### Edge distances

It is a special benefit of the EJOT frame anchors that they have virtually no expansion. Therefore, significantly smaller edge distances are possible than with conventional anchors. Please note the information given by the wall material manufacturer. Without specification given by the wall material manufacturer, we recommend a minimum edge distance of 50 mm for the EJOT frame anchors.

### Note

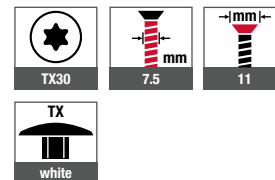
For the installation of burglar-resistant or anti-fall devices, special assembly instructions apply!

[www.ejot.com/window-and-glass-facade-technology](http://www.ejot.com/window-and-glass-facade-technology)

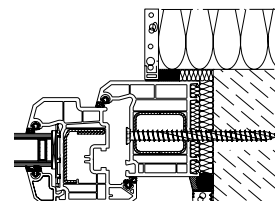
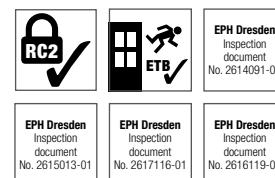
### Applications



### Technical specifications



### Certifications





Building materials	Installation depth ≥ [mm]
Concrete	30
Sand-lime brick, solid brick	40
Vertically perforated brick, lightweight concrete, pumice, aerated concrete	60
Soft wood	60
Hard wood	40

Building materials	Pre-drilling diameter [mm]	Drilling method
Steel, t = 2 mm	6.2	Rotary drilling
Steel, t = 4 mm	6.5	Rotary drilling
Concrete ≥ C12/15, Solid sand-lime brick, solid brick	6.0	Hammer drilling
Perforated sand-lime brick, Hollow block, hard wood	6.0	Rotary drilling
Vertically perforated brick ≥ Plan T12	5.0	Rotary drilling
Aerated concrete ≥ PP4	omitted	omitted

**Product online**



Order description	Length [mm]	PU [pieces]	Price/100 [EUR]	Article number	EAN
<b>zinc-plated, blue passivated</b>					
Frame anchor type RA-P-7.5x40	40	100		2231040601	4061245013060
Frame anchor type RA-P-7.5x60	60	100		2231060601	4061245013053
Frame anchor type RA-P-7.5x70	70	100		2231070601	4061245013046
Frame anchor type RA-P-7.5x80	80	100		2231080601	4061245013039
Frame anchor type RA-P-7.5x90	90	100		2231090601	4061245013022
Frame anchor type RA-P-7.5x100	100	100		2231100601	4061245013015
Frame anchor type RA-P-7.5x120	120	100		2231120601	4061245013008
Frame anchor type RA-P-7.5x135	135	100		2231135601	4061245012995
Frame anchor type RA-P-7.5x150	150	100		2231150601	4061245012988
Frame anchor type RA-P-7.5x180	180	100		2231180601	4061245012971
Frame anchor type RA-P-7.5x210	210	100		2231210601	4061245012964
Frame anchor type RA-P-7.5x250	250	50		2231250601	4061245012957
Frame anchor type RA-P-7.5x300	300	50		2231300601	4061245012940

Other colours for cover caps available on request